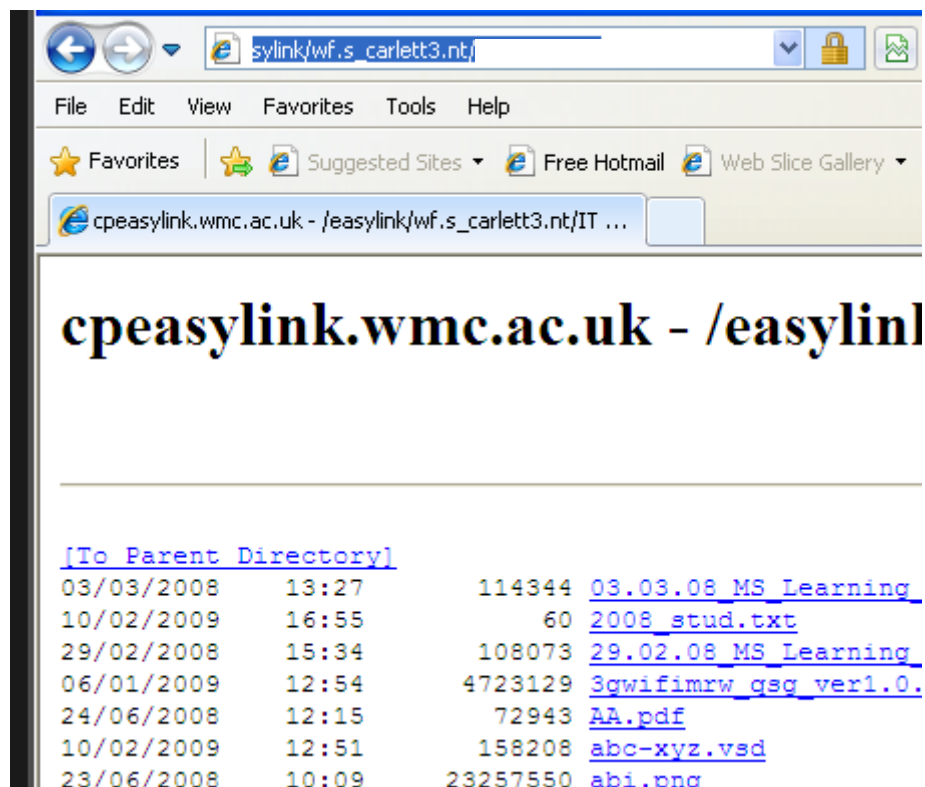


Connect to Easylink when using Windows XP and Internet Explorer 8

This document covers how to overcome the problems connecting to Easylink after upgrading to Internet Explorer 8 in Windows XP.

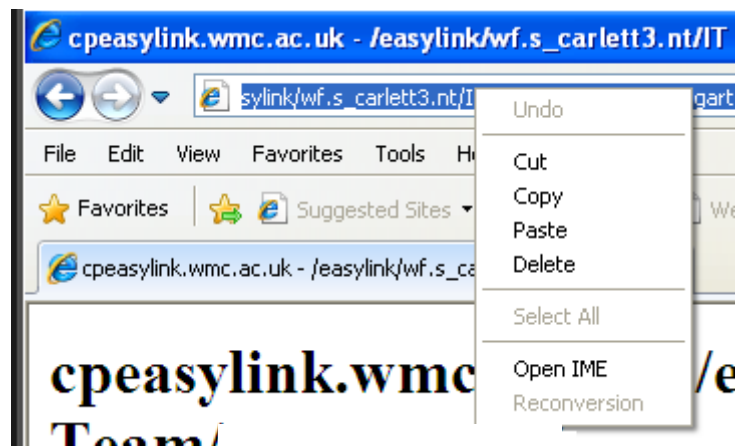
LAST UPDATED:	14/07/09
REVISION:	2
DOCUMENT CODE:	6
SOFTWARE REQUIRED:	INTERNET EXPLORER 8 MICROSOFT WINDOWS XP

When using Internet Explorer 8 (IE8) to connect to Easylink, items in Home Directory show as a list instead of icons, similar to below:

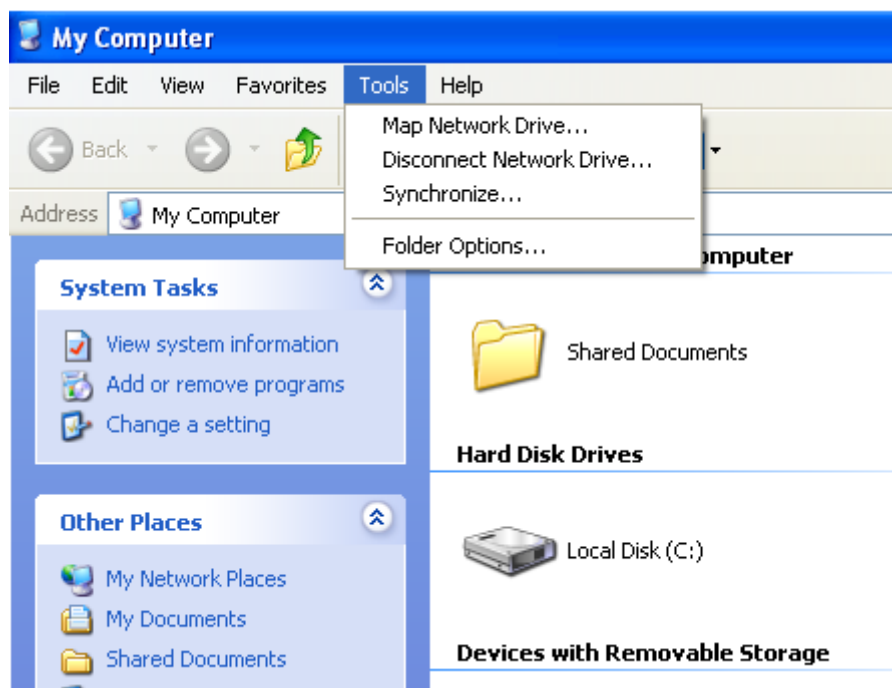


This is due to a change in the way IE8 connects to the Internet. To correct this, you need to do the following.

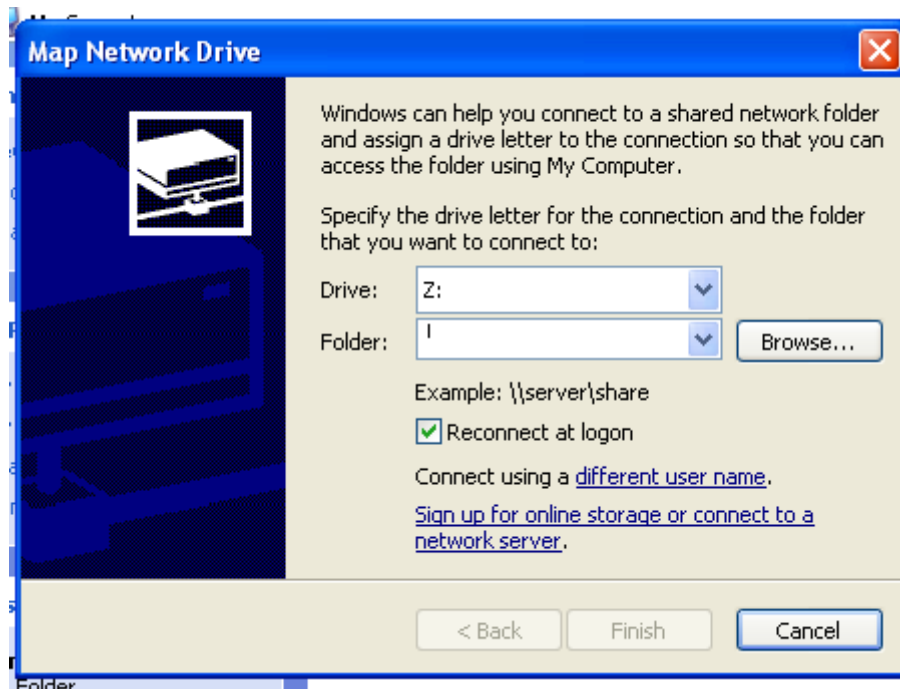
Open up your Home Directory as you always have done, this will show you a list of files. Select the text in the address bar and right click and then select Copy



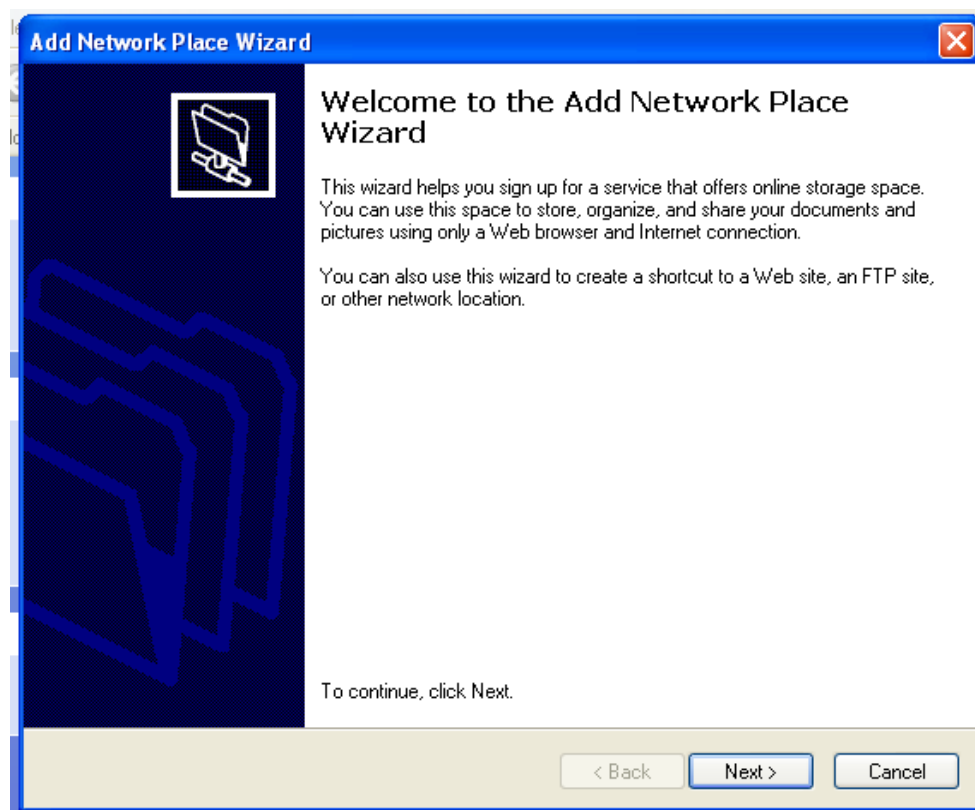
Now go to My Computer and select Tools – Map Network Drive.



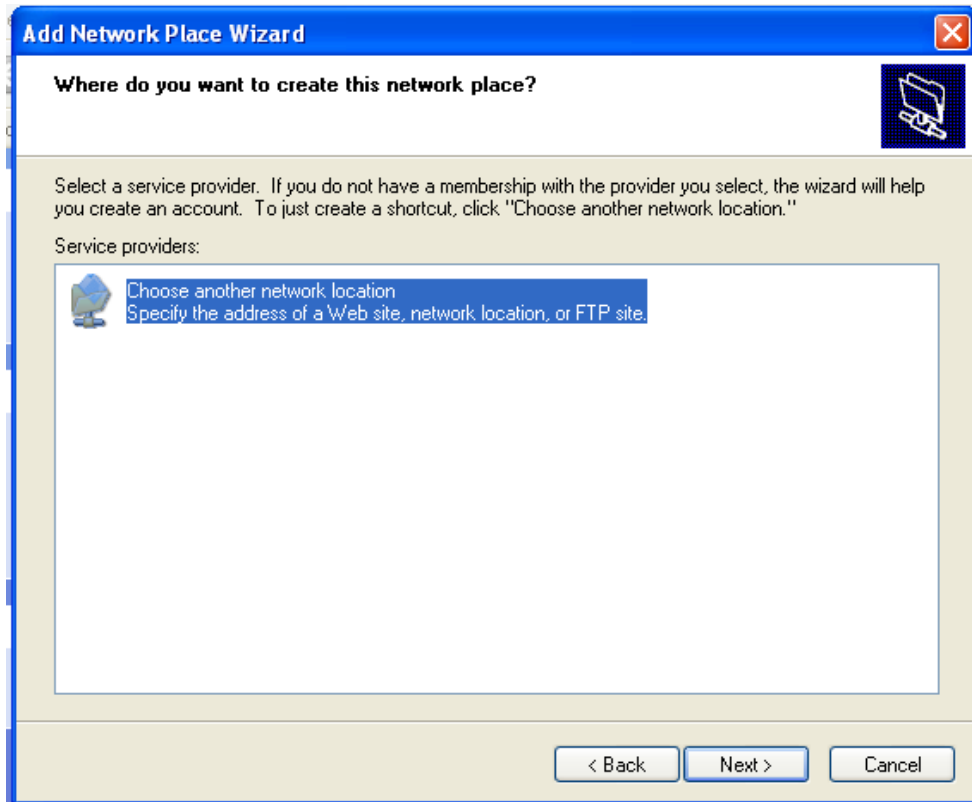
In the new window, select the Sign up for online storage or connect to a network server.



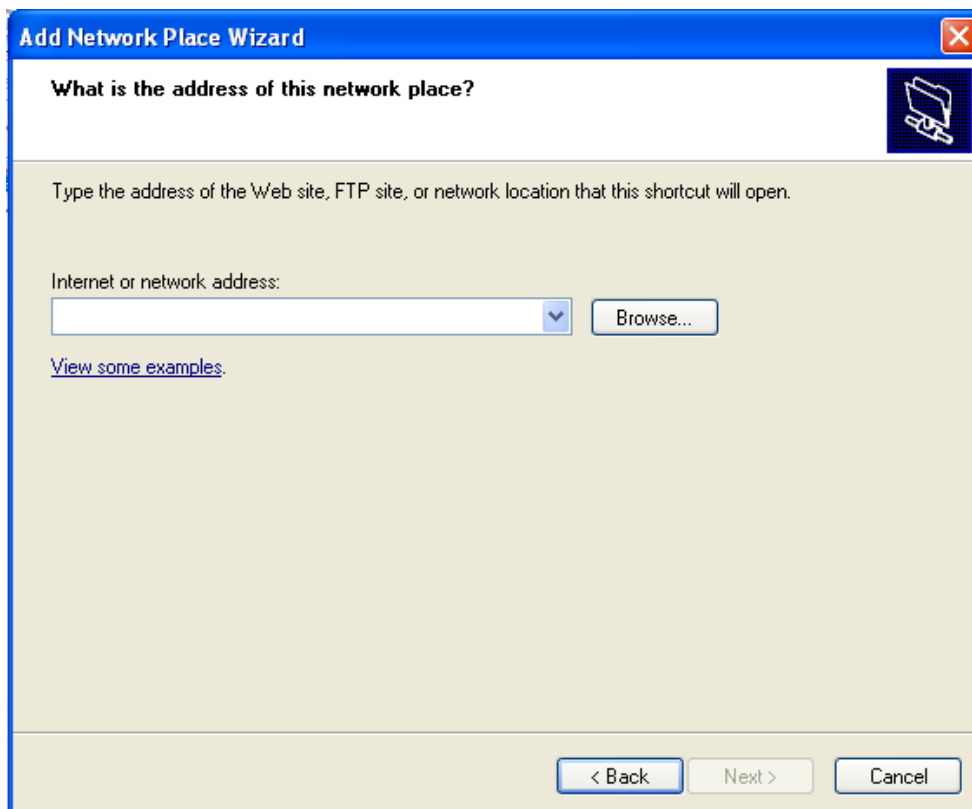
This will start the Add Network Place Wizard. Click Next to start the Wizard.



There is only one option available anyway so click Next.



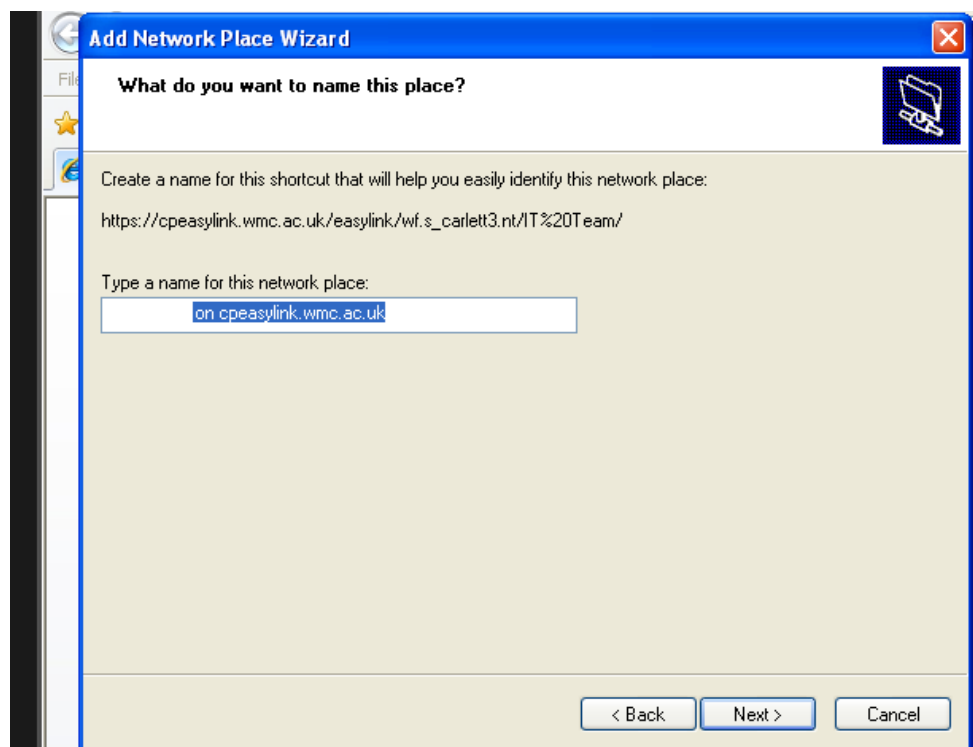
In the new window, paste in the address you copied earlier. This can be done by right clicking in the white space and selecting "Paste". Click Next once you have done that.



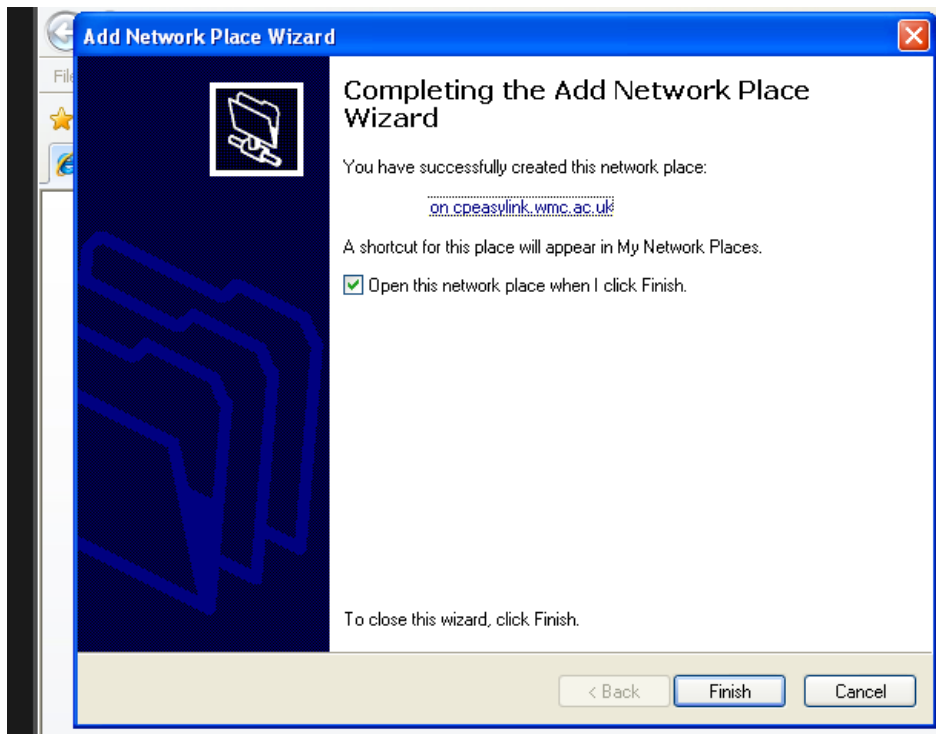
This stage may take a few moments and you will then be presented with a login box. Here, type in your WMC username and password.



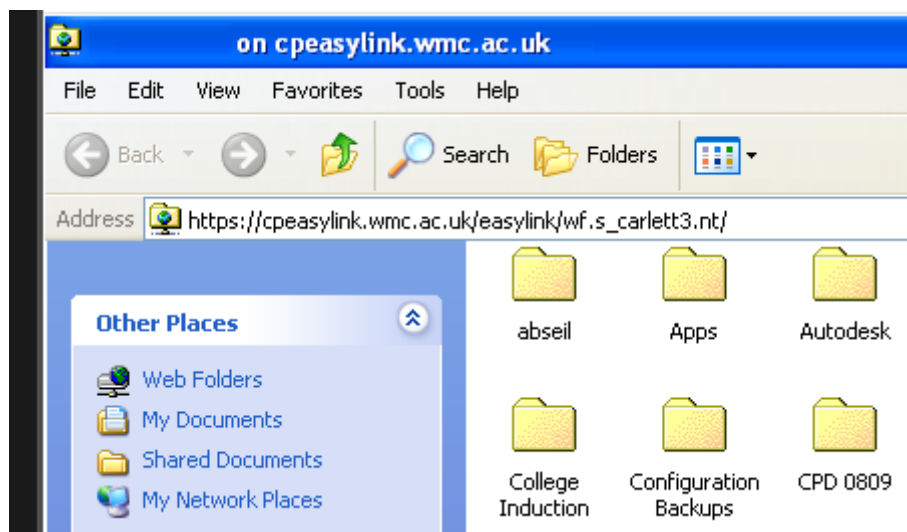
After successfully entering your username, you will be given an option what to name the new connection, typically the default can be left. Click Next.



The Wizard has now finished. Click on Finish to open your home drive.



You may well be prompted to enter your WMC username and password again.



Technical Information

This is featured in RM document: TEC1435858