

**HIGHER
EDUCATION
PROSPECTUS**
2018/19



Wirral Met College

CONTENTS

- 03 WELCOME FROM THE PRINCIPAL
- 04 REASONS TO CHOOSE WIRRAL MET
- 05 OUR UNIVERSITY PARTNERS
- 06 OUR CAMPUSES
- 07 GETTING TO COLLEGE
- 08 SUPPORT FOR STUDENTS
- 10 LEARNING RESOURCE CENTRES
- 40 HOW DO I APPLY?
- 42 FINANCE & LOANS
- 44 STUDY SUPPORT

COLLEGE COURSES/PROGRAMMES:

- 11 ACCESS TO HIGHER EDUCATION (HE)
- 12 ART, DESIGN & CREATIVE MEDIA
 - Art & Design
 - Creative Media
 - Photography
- 18 CHILDHOOD STUDIES & EARLY YEARS EDUCATION
- 20 COMPUTING
- 22 CONSTRUCTION & THE BUILT ENVIRONMENT
- 24 ENGINEERING
- 28 PSYCHOLOGY
- 30 SCIENCE
- 34 TEACHER TRAINING
- 36 TRAVEL & TOURISM
- 38 CONTINUING PROFESSIONAL DEVELOPMENT

FOR THE LATEST INFORMATION ON NEW COURSES STARTING SEPTEMBER 2018, VISIT: wmc.ac.uk/higher-education

Visit wmc.ac.uk/higher-education for the dates of our open evenings. Call in to our Conway Park Campus and speak to one of our Student Advisers for impartial advice and guidance to help you choose the right programme.

We would love to hear your comments about this prospectus. Please email marketing@wmc.ac.uk

Please note, every care has been taken to ensure the details in this prospectus were accurate at the time of going to print, however, we may need to update our course/programme offer and/or services from time to time. Please visit our website at wmc.ac.uk for the latest information.

WELCOME FROM THE PRINCIPAL

THANK YOU FOR CONSIDERING WIRRAL MET COLLEGE FOR YOUR HIGHER EDUCATION.

I realise that this is an important decision that has the potential to be life changing and that you will be considering the most appropriate programme to develop your knowledge and skills in order to compete in today's fast changing market.

We aim to provide an exciting, dynamic and successful learning experience for all of our students. If you choose to join us, our qualified and experienced team of staff will support you in every aspect of your studies. We have excellent partnerships with a range of universities and I am sure you already realise that studying higher education at your local college provides excellent value for money.

We have invested millions of pounds into our campuses and our excellent facilities are complete with the latest technology and industry standard workshops, to enable you to harness innovation as you develop your learning.

We understand that it can be difficult to combine study with work and family commitments, and our extensive range of student resources and support are designed to help you succeed.

Don't just take our word for it, come and see what we have to offer. If you choose to join our many successful students, I look forward to seeing you on campus and eventually, meeting you and your family at our annual Higher Education Graduation Ceremony, where we will celebrate your success in your cap and gown!

Sue Higginson
Principal



REASONS TO CHOOSE WIRRAL MET

QUALITY

The Quality Assurance Agency for Higher Education (QAA) has confirmed the high quality and standards of provision at Wirral Met College following its review in March 2015.



UK Quality Assured

LOWER FEES & COSTS

Our fees are much lower than many universities; if you want affordable university level courses, stay local and you will save on accommodation and travel costs. Call in for guidance on fees, loans and how to get the most from the financial assistance available.

STUDENT BURSARIES

Students studying on a full-time degree programme can access bursaries:

Support Bursary - £500 per annum for students with a household income below £25,000.

Access and Progression Bursary - £500 per annum for students with a household income between £25,001 and £42,600 and who have studied at Wirral Met College in the previous two years.

Visit wmc.ac.uk/higher-education or call **0151 551 7777** for details.

OUTSTANDING STUDENT SUPPORT

We offer small class sizes and outstanding personal support for students. We hold the national matrix Standard which highlights the quality of our independent advice and guidance.

FIT YOUR STUDY AROUND WORK AND FAMILY LIFE

Our full-time courses/programmes only need you to attend up to 3 days per week and many offer part-time study.

READ WHAT OUR STUDENTS SAID IN THE NATIONAL STUDENT SURVEYS 2015-2016 & 2016-2017:

"All tutors are always there with advice and support."

"The small class sizes have been great, less intimidating than more usual larger, university type classes. Teaching is first class on the whole."

"Tutors are brilliant."

"Great environment to work in, staff are positive and good access to resources."

"There is ample support from staff, even outside of class. They are very willing to give advice and support when it is needed."

"I have had the opportunity through the course to acquire experience within the field."

Take a look at our **Higher Education video** – wmc.ac.uk/higher-education.

OUR UNIVERSITY PARTNERS



The University of Central Lancashire (UCLan) is one of the largest universities in the UK. UCLan has recently received a silver quality award for 'consistently exceeding rigorous national quality requirements' in the first ever national Teaching Excellence Framework (TEF) assessment.

UCLan is estimated to be in the top 3.7% of universities by the Centre for World University Rankings 2016 (CWUR).

As a partner of UCLan, Wirral Met College shares UCLan's commitment to quality, personalised provision and excellent support for students.



Wirral Met College is proud to be working in partnership with The University of Liverpool, which is ranked as one of the top 200 universities in the world. The University of Liverpool's aim is to support students as they become highly employable, creative, and culturally rich graduates, with the capacity to find employment that will enable them to be agents for change in a connected world. 91% of the university's UK undergraduate graduates are in employment or further study within 6 months of completing their course.



Working in partnership with The University of Chester, Wirral Met College shares a common interest in promoting progression to, and awareness of, higher education opportunities within the region.

The University of Chester seeks to provide all students and staff with the education, skills, support and motivation to enable them to develop as confident world citizens and successfully to serve and improve the global communities within which they live and work.

At the heart of the University's vision is an unwavering commitment to ensuring an outstanding student learning experience, developing the expertise of staff, providing teaching excellence, and actively growing research and scholarship.

Degree level students studying at Wirral Met College have the same status from the partner university and can enjoy the benefits of their university facilities and services, which include online and library resources.

OUR CAMPUSES, HOME TO HIGHER EDUCATION (HE)



CONWAY PARK CAMPUS

Europa Boulevard, Conway Park, Birkenhead, Wirral CH41 4NT

Our Conway Park Campus is easily accessible by public transport – a short walk from Birkenhead bus station and opposite Conway Park train station.



WIRRAL WATERS CAMPUS

Tower Road, Birkenhead, CH41 1AA

A short walk from Seacombe Ferry Terminal, Woodside Ferry Terminal and Birkenhead Hamilton Square train station.

All campuses have cafes and free wifi access.



TWELVE QUAYS CAMPUS

Shore Road, Birkenhead, Wirral CH41 1AG

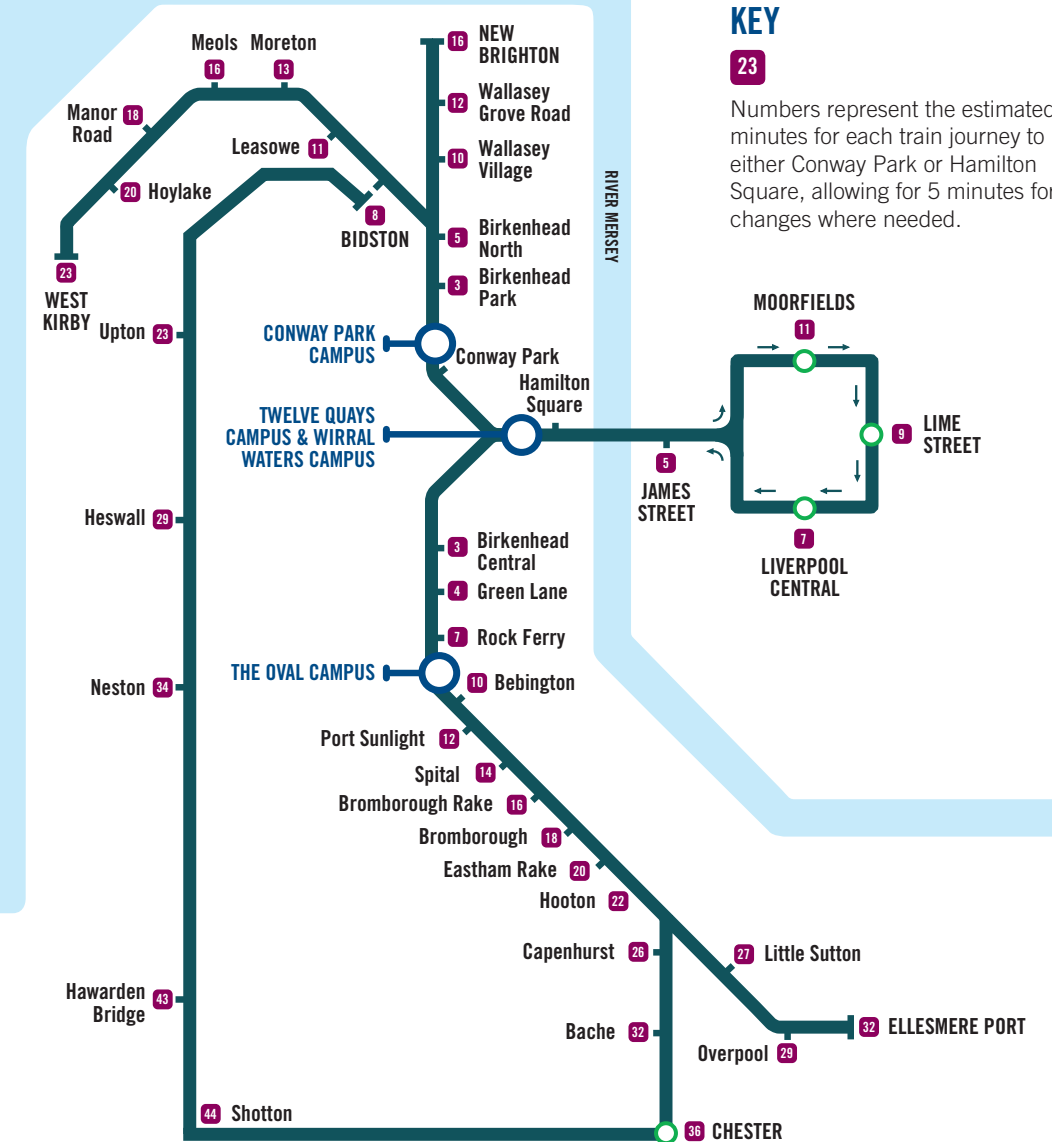
Our Twelve Quays Campus is easily accessible by public transport - a few minutes from Woodside Ferry Terminal and Birkenhead Hamilton Square train station, and just ten minutes' walk from Birkenhead bus station.

INTERESTED IN A CAMPUS TOUR?

Call **0151 551 7777** and speak to the Marketing team – we will show you round!

WIRRAL MET... YOUR LOCAL COLLEGE

(Source of information: merseyrail.org)



Visit wmc.ac.uk for maps, and travel directions.

SUPPORT FOR STUDENTS

WIRRAL MET COLLEGE'S INFORMATION, ADVICE & GUIDANCE SERVICE HOLDS THE NATIONAL MATRIX STANDARD WHICH MEANS WE ARE COMMITTED TO GIVING YOU IMPARTIAL ADVICE AND GUIDANCE.

If you cannot find the programme(s) you are looking for, or you need more information, please call **0151 551 7777**, visit **wmc.ac.uk** and complete the online enquiry form, or call in to our Conway Park Campus and speak to one of our Student Advisers.

GET IN TOUCH IF YOU WOULD LIKE TO:

- + discuss your career ideas
- + get help with choosing the right course
- + find out more information about our courses
- + discover the different ways you can study
- + access support services e.g. additional learning support

Our Student Advisers offer a friendly, confidential and welcoming service to help you make the most of your time at college. Our Student Advisers are available between 10.00am - 4.00pm, Monday-Friday (all year round), with late opening on Wednesdays and Thursdays (term time only) until 6.30pm.

ADDITIONAL LEARNING SUPPORT

The Additional Learning Support team are here to help students to be as successful as possible. We have a team of over 60 highly trained and qualified staff, including Specialist Tutors, Communication Support Workers and Learning Support Assistants.

We work with students in every subject area, and at every level from Entry Level to Higher Education. The students we work with have a wide range of needs, including:

- + Dyslexia/Dyspraxia
- + ADHD, ADD
- + Mental Health and Well Being
- + Physical Difficulties
- + D/deaf or Hard of Hearing
- + Blind or Partially Sighted
- + Autism Spectrum/Asperger's Syndrome

Please note, if you are studying on a higher education programme, you will need to apply for the **Disabled Students' Allowance** - see page 44.



LEARNING RESOURCE CENTRES

YOU WILL HAVE ACCESS TO OUR LEARNING RESOURCE CENTRES AT OUR CONWAY PARK AND TWELVE QUAYS CAMPUSES.

⊕ Not just a library – you will find a wide range of resources, DVDs, CDs, journals, newspapers, magazines and electronic resources to help you with your research and coursework. You will also have access to the electronic resources of your awarding university.

⊕ A quiet place to study – with computer and internet access. We have designated quiet spaces at Conway Park and Twelve Quays Campuses which can be booked in advance. Our team will help you find what you need for your project or assignment.

⊕ Inter-library loans & photocopying facilities – If we do not have an item and you need it for coursework, we will obtain it for you free of charge.



ACCESS TO HIGHER EDUCATION (HE)

IF YOU DON'T HAVE THE NECESSARY QUALIFICATIONS TO START A DEGREE LEVEL PROGRAMME, ACCESS TO HE COURSES ARE DESIGNED FOR ADULTS AGED 19+ AND PREPARE YOU FOR STUDY AT DEGREE LEVEL.

We offer Access to HE courses in the following areas:

- ⊕ Art & Design
- ⊕ Business
- ⊕ Computing
- ⊕ Health (Midwifery)

- ⊕ Health (Nursing)
- ⊕ Humanities
- ⊕ Performing Arts
- ⊕ Primary Education
- ⊕ Psychology
- ⊕ Science
 - Biomedical Science
 - Medical Science
 - Science
- ⊕ Sociology, Criminology and Social Work

For further information, call our Student Advisers on **0151 551 7777** or visit **wmc.ac.uk**.

WIRRAL MET COLLEGE'S ART SCHOOL HAS A REPUTATION FOR QUALITY AND CREATIVITY.

Based at the Twelve Quays Campus and the Woodside Art Studios nearby, you will have access to Fine Art studios, print and 3D workshops, illustration and animation studios. These facilities are complemented by a team of experienced staff, who are dedicated to helping you explore and harness your creative talent.

| BA Honours Fine Art | | | |
|---------------------|------------------------|-----------------------|------------------|
| DURATION | WIRRAL MET COURSE CODE | UCAS INSTITUTION CODE | UCAS COURSE CODE |
| 3 years full-time | A006 | W73 | W100 |
| 6 years part-time | A007 | - | - |

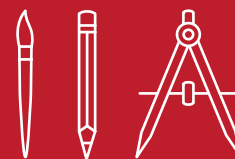
| BA Honours Illustration with Animation | | | |
|--|------------------------|-----------------------|------------------|
| DURATION | WIRRAL MET COURSE CODE | UCAS INSTITUTION CODE | UCAS COURSE CODE |
| 3 years full-time | A026 | W73 | W2W6 |
| 6 years part-time | A027 | - | - |

HOW DO I APPLY?

Full-time courses – apply via UCAS. Part-time courses – apply online or complete a Wirral Met College application form.

For more details about entry requirements, the structure and content of these courses, visit wmc.ac.uk/higher-education, or speak to a Student Adviser - call **0151 551 7777**.

Programmes validated by:



WHERE ARE THEY NOW?



STEPHEN SHEEHAN completed his BA (Hons) Degree in Fine Art at Wirral Met and is now an international conceptual and performance artist who has held residencies in places such as Ukraine, USA and Finland.



£500 BURSARY ON OFFER FOR FULL-TIME DEGREE COURSES

CREATIVE MEDIA AND GAMES ART & DESIGN ARE EXCITING NEW COURSES STARTING 2018

Creative media covers a wide range of career routes from graphic design, website design and development to TV/radio production and the development of specialist software for games design. You will study in our Twelve Quays Campus with the support of experienced and dedicated tutors.

NEW FOR 2018! - BA Honours Games Art and Design

| DURATION | WIRRAL MET COURSE CODE | UCAS INSTITUTION CODE | UCAS COURSE CODE |
|-------------------|------------------------|-----------------------|------------------|
| 3 years full-time | TBC | W73 | TBC |

Please note, this programme is subject to validation by the University of Chester.

HOW DO I APPLY?

Apply via UCAS.

Programme validated by:



NEW FOR 2018! - Higher National Certificate (HNC) Creative Media

| DURATION | WIRRAL MET COURSE CODE | UCAS INSTITUTION CODE | UCAS COURSE CODE |
|-------------------|------------------------|-----------------------|------------------|
| 2 years full-time | P080 | W73 | TBC |

HOW DO I APPLY?

Apply via UCAS.

For more details about entry requirements, the structure and content of these courses, visit wmc.ac.uk/higher-education, or speak to a Student Adviser - call **0151 551 7777**.

Programme validated by:



**£500
 BURSARY ON
 OFFER FOR
 FULL-TIME
 DEGREE
 COURSES**



BASED AT OUR TWELVE QUAYS CAMPUS, YOU WILL LEARN ABOUT THE VARIOUS APPLICATIONS OF PHOTOGRAPHY, SUCH AS FASHION, ADVERTISING AND LANDSCAPES.

Using both film and digital platforms, you will develop your technical knowledge of photography whilst building your practical skills and experience. Our experienced tutors will support you every step of the way, to help you progress onto a degree or professional career in photography.

| BTEC Higher National Certificate (HNC) Photography | |
|---|-------------------------------|
| DURATION | WIRRAL MET COURSE CODE |
| 2 years part-time | P056 |

HOW DO I APPLY?

Apply online or complete a Wirral Met College application form.

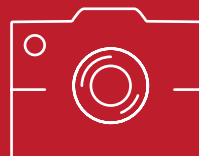
| BTEC Higher National Diploma (HND) Photography | | |
|---|------------------------------|-------------------------|
| DURATION | UCAS INSTITUTION CODE | UCAS COURSE CODE |
| 2 years full-time | W73 | W640 |

HOW DO I APPLY?

Apply via UCAS.

For more details about entry requirements, the structure and content of these courses, visit wmc.ac.uk/higher-education, or speak to a Student Adviser - call **0151 551 7777**.

Programmes validated by:



WHERE ARE THEY NOW?



ALEXANDRE STEWART is interested in many aspects of art and design, with photography being his main passion. Alex won first and second prize in a Wirral Tourism photography competition. His winning photos were published in the Wirral's Visitor Guide.



THERE ARE A NUMBER OF VERY REWARDING CAREER OPTIONS DEDICATED TO THE CARE AND DEVELOPMENT OF CHILDREN.

You will study at our Twelve Quays Campus with our team of experienced practitioners. They will develop your knowledge and skills and support you throughout your degree programme, which will prepare you for an exciting career in this sector.

| NEW for 2018! - BA Honours Early Years Childcare | | |
|--|-----------------------|------------------|
| DURATION | UCAS INSTITUTION CODE | UCAS COURSE CODE |
| 3 years full-time | W73 | X320 |

HOW DO I APPLY?

Apply via UCAS.

For more details about entry requirements, the structure and content of these courses, visit wmc.ac.uk/higher-education, or speak to a Student Adviser - call **0151 551 7777**.

Programme validated by:



Please note, this programme is subject to validation by the University of Chester.

CONTINUING PROFESSIONAL DEVELOPMENT (CPD) COURSES IN THIS AREA INCLUDE:

- ➊ CACHE Early Years Advanced Practitioner Level 4 Certificate

Visit wmc.ac.uk for details



WHERE ARE THEY NOW?

TABBATHA IRELAND studied Level 5 HND Advanced Practice in Work with Children and Families and was working full-time at a local day nursery, before progressing to an Education Studies top-up degree at Glyndwr University.



AS TECHNOLOGY CONSTANTLY CHANGES, THIS IS A VERY FAST MOVING AND EXCITING AREA TO BE INVOLVED IN.

From data communications and networking technologies to programming or website design, you will learn about the latest developments in this innovative industry. You will study in Wirral Met's new Science, Technology, Engineering and Maths (STEM) Centre at our Twelve Quays Campus and have access to the latest technology including Drones, software, IT facilities and virtual learning tools. Our dedicated tutors will help you develop the skills you need to succeed in this industry.

Foundation Degree (FdSc) Computer Science

| DURATION | UCAS INSTITUTION CODE | UCAS COURSE CODE |
|-------------------|-----------------------|------------------|
| 2 years full-time | W73 | G500 |

HOW DO I APPLY?

Apply via UCAS.

Students can progress into study at the University of Chester for 1 year to complete the degree in Computer Science.

For more details about entry requirements, the structure and content of these courses, visit wmc.ac.uk/higher-education, or speak to a Student Adviser - call **0151 551 7777**.

Programme validated by:



WHERE ARE THEY NOW?

SOPHIE HOWARD completed her Foundation Degree in Computer Science at Wirral Met and has progressed to study graphic design.



**£500
BURSARY ON
OFFER FOR
FULL-TIME
DEGREE
COURSES**

CONSTRUCTION IS USED TO DESCRIBE A VARIETY OF TRADES AND CAREERS AND THESE QUALIFICATIONS CAN HELP YOU PROGRESS TO SENIOR TECHNICAL AND MANAGEMENT POSITIONS.

Our multi-million pound award winning Wirral Waters Campus is dedicated to providing outstanding facilities to support education and training for Construction and The Built Environment. It is located near our Twelve Quays Campus, a short walk from Woodside Ferry Terminal, Seacombe Ferry Terminal and Birkenhead Hamilton Square train station. You will develop your theoretical knowledge and understanding with the excellent support of our tutors who have commercial experience and professional expertise.

BTEC Higher National Certificate (HNC) Construction & the Built Environment

| DURATION | WIRRAL MET COURSE CODE |
|------------------------|------------------------|
| 1 year part-time (day) | R034 |

BTEC Higher National Diploma (HND) Construction & the Built Environment (HNC Conversion)

| DURATION | WIRRAL MET COURSE CODE |
|------------------------|------------------------|
| 1 year part-time (day) | R218 |

HOW DO I APPLY?

Apply online or complete a Wirral Met College application form.

CONTINUING PROFESSIONAL DEVELOPMENT (CPD) COURSES IN THIS AREA INCLUDE:

- ⊕ NVQ Level 6 Diploma Construction Site Management
- ⊕ NEBOSH National Diplomas in Health & Safety

Visit wmc.ac.uk/higher-education for details.

For more details about entry requirements, the structure and content of these courses, visit wmc.ac.uk/higher-education, or speak to a Student Adviser - call **0151 551 7777**.

Programmes validated by:



Pearson



YOU WILL STUDY IN THE NEW SCIENCE, TECHNOLOGY, ENGINEERING AND MATHS (STEM) CENTRE AT OUR TWELVE QUAYS CAMPUS, WHICH IS COMPLETE WITH THE LATEST TECHNOLOGY AND INDUSTRY SPECIALIST ENGINEERING EQUIPMENT.

Excellent links with large and small employers have enabled us to develop a flexible range of qualifications to equip you with the skills and knowledge you need to succeed in this industry.

BTEC Higher National Certificate (HNC) Engineering

| DURATION | WIRRAL MET COURSE CODE |
|-------------------------|------------------------|
| 2 years part-time (day) | E006 |

BTEC Higher National Diploma (HND) Engineering (HNC Conversion)

| DURATION | WIRRAL MET COURSE CODE |
|------------------------|------------------------|
| 1 year part-time (day) | E099 |

BTEC Higher National Certificate (HNC) in Automotive Engineering

| DURATION | WIRRAL MET COURSE CODE |
|-------------------------|------------------------|
| 2 years part-time (day) | E152 |

HOW DO I APPLY?

Apply online or complete a Wirral Met College application form.

COURSES CONTINUED ON PAGE 26...



BTEC Higher National Certificate (HNC) in Electrical and Electronic Engineering

| DURATION | WIRRAL MET COURSE CODE |
|-------------------------|------------------------|
| 2 years part-time (day) | E153 |

BTEC Higher National Certificate (HNC) in General Engineering

| DURATION | WIRRAL MET COURSE CODE |
|-------------------------|------------------------|
| 2 years part-time (day) | E154 |

BTEC Higher National Certificate (HNC) in Manufacturing Engineering

| DURATION | WIRRAL MET COURSE CODE |
|-------------------------|------------------------|
| 2 years part-time (day) | E155 |

BTEC Higher National Certificate (HNC) in Mechanical Engineering

| DURATION | WIRRAL MET COURSE CODE |
|-------------------------|------------------------|
| 2 years part-time (day) | E156 |

HOW DO I APPLY?

Apply online or complete a Wirral Met College application form.

Please note, some of these HNC courses may have combined delivery.

For more details about entry requirements, the structure and content of these courses, visit wmc.ac.uk/higher-education, or speak to a Student Adviser - call **0151 551 7777**.

Programmes validated by:



WHERE ARE THEY NOW?

KEVIN LEICESTER initially studied HNC Engineering before progressing to HND Engineering at Wirral Met. Kevin is looking forward to furthering his studies and career by studying towards an Honours Degree in Engineering in the near future.

WORKING CLOSELY WITH NHS TRUSTS, LOCAL AUTHORITIES AND PRIVATE BUSINESSES, WE HAVE BUILT OUR REPUTATION FOR HIGH QUALITY EDUCATION AND TRAINING IN PSYCHOLOGY.

BSc Honours Psychology (2 plus 2)

2 years full-time at Wirral Met College, followed by 2 years full-time at the University of Liverpool.

| DURATION | UCAS INSTITUTION CODE NAME | UCAS INSTITUTION CODE | UCAS COURSE CODE |
|-------------------|----------------------------|-----------------------|------------------|
| 4 years full-time | LVRPL | L41 | C801 |

HOW DO I APPLY?

Apply via UCAS.

For more details about entry requirements, the structure and content of these courses, visit wmc.ac.uk/higher-education, or speak to a Student Adviser - call **0151 551 7777**.

Programme validated by:



WHERE ARE THEY NOW?



SARAH BROUGHTON studied a BSc (Hons) Psychology at Wirral Met before completing her course at the University of Liverpool. Sarah is now studying Psychology and Counselling and is looking forward to applying for a Masters Degree in Counselling.



£500 BURSARY ON OFFER FOR FULL-TIME DEGREE COURSES

IF YOU ARE KEEN TO PROGRESS IN A CAREER IN SCIENCE, TAKE ADVANTAGE OF WIRRAL MET COLLEGE'S NEW INDUSTRY-STANDARD LABORATORIES AND INSTRUMENTATION ROOMS AT OUR TWELVE QUAYS CAMPUS.

Students studying on Science courses will study in our Science, Technology, Engineering and Maths (STEM) Centre at our Twelve Quays Campus. The centre includes science laboratories that accommodate specialist equipment and facilities you would expect to see in a university. For careers in chemistry and/or chemical science, we offer a range of university level qualifications, helping you to progress up the career ladder and gain promotions to more senior roles.



BTEC Higher National Certificate (HNC) Applied Chemistry

| DURATION | WIRRAL MET COURSE CODE |
|-------------------------|------------------------|
| 2 years part-time (day) | S005 |
| 1 year part-time (day)* | S155 |

*For those working in the Chemistry industry.

BTEC Higher National Diploma (HND) Applied Chemistry

| DURATION | WIRRAL MET COURSE CODE |
|-------------------------|------------------------|
| 2 years part-time (day) | S156 |
| 1 year part-time (day)* | S010 |

*For those working in the Chemistry industry, or who have completed the 2 year HNC programme.

HOW DO I APPLY?

Apply online or complete a Wirral Met College application form.

For more details about entry requirements, the structure and content of these courses, visit wmc.ac.uk/higher-education, or speak to a Student Adviser - call **0151 551 7777**.

Programmes validated by:



COURSES CONTINUED ON PAGE 32...

Foundation Degree (FdSc) in Chemistry

2 years full-time at Wirral Met. Students can then progress onto the BSc Honours Applied Chemistry (top up)

| DURATION | WIRRAL MET COURSE CODE | UCAS INSTITUTION CODE | UCAS COURSE CODE |
|-------------------------|------------------------|-----------------------|------------------|
| 2 years full-time | S154 | W73 | F100 |
| 3 years part-time (day) | S153 | - | - |

HOW DO I APPLY?

Full-time courses: Apply via UCAS. Part-time courses: Apply online or complete a Wirral Met College application form.

BSc Honours Applied Chemistry (top up)

| DURATION | WIRRAL MET COURSE CODE | UCAS INSTITUTION CODE | UCAS COURSE CODE |
|-------------------------|------------------------|-----------------------|------------------|
| 2 years part-time (day) | S233 | - | - |

HOW DO I APPLY?

Apply online or complete a Wirral Met College application form.

Programmes validated by:



We also offer **Higher Apprenticeships** in Chemical Science (level 4); visit wmc.ac.uk/higher-education for full details.

CONTINUING PROFESSIONAL DEVELOPMENT (CPD) COURSES IN THIS AREA INCLUDE:

- + NVQ Level 4 Laboratory and Associated Technical Activities

For more details about entry requirements, the structure and content of these courses, visit wmc.ac.uk/higher-education, or speak to a Student Adviser - call **0151 551 7777**.



WHERE ARE THEY NOW?

KIRSTY MILLER studied HNC in Chemistry at Wirral Met and has progressed onto HND in Chemistry. Her employers will then sponsor her to study BSc (Hons) Applied Chemistry at Wirral Met.



**£500
BURSARY ON
OFFER FOR
FULL-TIME
DEGREE
COURSES**

PROFESSIONAL CAREERS IN TEACHING ARE HIGHLY REWARDING, AND INSPIRATIONAL TEACHING CAN MAKE A REAL DIFFERENCE TO THE LIVES OF STUDENTS.

You will be based at our Twelve Quays Campus where our experienced tutors will help you develop a wide range of interactive, student focused teaching methods and resources, so that you can be an outstanding teacher, tutor or trainer. These qualifications prepare you for teaching in the post-16 education and training sector.

| Certificate in Education (Education and Training) | |
|---|------------------------|
| DURATION | WIRRAL MET COURSE CODE |
| 1 year full-time | B107 |
| 2 years part-time | B109 |

| Postgraduate Certificate in Education (Education and Training) | |
|--|------------------------|
| DURATION | WIRRAL MET COURSE CODE |
| 1 year full-time | B108 |
| 2 years part-time | B110 |

HOW DO I APPLY?

Apply online or complete a Wirral Met College application form.

For more details about entry requirements, the structure and content of these courses, visit wmc.ac.uk/higher-education, or speak to a Student Adviser - call **0151 551 7777**.

Programmes validated by:



WHERE ARE THEY NOW?



CALLUM LEACH worked at Wirral Hospital School's Joseph Paxton Campus with autistic children whilst he studied towards the Certificate in Education at Wirral Met. He said, "I strongly recommend the Cert Ed course. It is very interesting and the tutors are very supportive".



AN EXCITING CAREER IN TRAVEL AND TOURISM STARTS WITH EXCEPTIONAL SKILLS AND KNOWLEDGE OF THE INDUSTRY.

Based at our Conway Park Campus, you will take part in events and trips to develop your knowledge and experience, which will prepare you for a successful career in this industry.

BTEC Higher National Diploma (HND) in Travel and Tourism Management

| DURATION | UCAS INSTITUTION CODE | UCAS COURSE CODE |
|-------------------|-----------------------|------------------|
| 2 years full-time | W73 | N800 |

HOW DO I APPLY?

Apply via UCAS.

For more details about entry requirements, the structure and content of these courses, visit wmc.ac.uk/higher-education, or speak to a Student Adviser - call **0151 551 7777**.

Programme validated by:



Pearson



WHERE ARE THEY NOW?



LEANNE HODGKINS completed her HND in Travel & Tourism with an overall distinction and went on to do a top up year in Liverpool John Moores University where she graduated with a First Class Honours Degree in Tourism Management.



HND Travel & Tourism Management students visited Iceland during their course.

CONTINUING PROFESSIONAL DEVELOPMENT (CPD) COURSES

COURSES AT LEVEL 4 AND ABOVE INCLUDE

ACCOUNTANCY

- + Associate of Accounting Technician (AAT) – Level 4 Diploma in Accounting
- + Higher Apprenticeship in Accounting (Level 4)

BRITISH SIGN LANGUAGE

- + British Sign Language Studies Level 4 & Level 6 Certificate

CHILDCARE & EARLY YEARS

- + CACHE Early Years Advanced Practitioner Level 4 Certificate

CONSTRUCTION

- + NVQ Level 6 Diploma Construction Site Management

COUNSELLING

- + Therapeutic Level 4 Counselling Diploma

HEALTH & SOCIAL CARE

- + Leadership for Health and Social Care Level 5 Diploma

HEALTH & SAFETY

- + NEBOSH National Diploma Occupational Health & Safety Unit A-D (Level 4 & Level 6)

INTERPRETING

- + Diploma in Public Service Interpreting (DPSI) Level 4

MANAGEMENT

- + Chartered Institute of Personnel and Development (CIPD) – Level 5 Intermediate Certificate in Human Resource Management
- + Institute of Leadership & Management (ILM) Leadership & Management Award Level 4
- + Salon Management Level 4 Certificate

SCIENCE

- + NVQ Level 4 Laboratory and Associated Technical Activities
- + Higher Apprenticeships in Chemical Science (Level 5)

SPORTS MASSAGE

- + VTCT Level 4 Certificate Sports Massage

TEACHER TRAINING

- + Certificate in English Language Teaching to Adults (CELTA) & Award in Education and Training Level 5



HOW DO I APPLY?

APPLYING FOR AN HE PROGRAMME IS EASY

Applying for a PART TIME HNC/HND, Foundation Degree and Degree:

1. IMPARTIAL INFORMATION, ADVICE AND GUIDANCE – we will help you explore your options and find the right programme – call us on **0151 551 7777** or come and see us at our Conway Park Campus.

2. APPLY

- Check you meet the entry requirements of the programme.
- Apply online at wmc.ac.uk/higher-education, or complete a Wirral Met College paper application form.

3. INTERVIEW

- You will be invited into the College to meet the tutors.
- Some programmes require you to present a portfolio of your work.
- You can discuss any learning support needs you may have.

4. OFFER

- If you meet the entry requirements on your programme, we will offer you a place at the College (this may be conditional on the results you get at A Level or for your other Level 3 qualifications).
- Please confirm you want to accept your offer.

5. KEEPING IN TOUCH

- ⊕ We will keep in touch with you and let you know how and when you can complete your enrolment, before you start your programme.
- ⊕ If you have a conditional offer, you must confirm your place as soon as you have received your results.

6. START YOUR HE PROGRAMME!

Applying for FULL TIME HND, Foundation Degree and Degree:

1. IMPARTIAL INFORMATION, ADVICE AND GUIDANCE – we will help you explore your options and find the right programme – call us on **0151 551 7777** or come and see us at our Conway Park Campus.

2. APPLY

- Check you meet the entry requirements of the programme. You need to apply for a full-time HE programme via **UCAS** (Universities and Colleges Admissions Service) at ucas.co.uk. Each electronic application sent to UCAS must be accompanied by a fee (full details on the UCAS website).
- Details of how to apply electronically are available on the UCAS website. UCAS applications start from 1st September.
- The college's UCAS code name is WIRMC and the code number is W73.** Details of the subject codes are listed next to the subject areas in this prospectus.
- Please take care when completing your Personal Statement – if you need advice or guidance with this, please contact a Student Adviser.

3. INTERVIEW

- Our Student Advisers check all the information on the application form, including your career aspirations and interests.
- We usually invite a candidate to visit the college to attend an interview with the HE Programme Tutor.

4. OFFER

- If you meet the entry requirements and your place does not depend on examinations results, you will receive an unconditional offer through UCAS for a place on the programme. Please confirm you want to accept this offer via UCAS.
- If your place depends upon exam results once they have been published, you will receive a conditional offer through UCAS, confirming the requirements you need to meet. Please confirm you want to accept this offer.

5. CONFIRMATION OF EXAM RESULTS

- Following your exam results, the UCAS website will show your confirmed offer (if you meet the course entry requirements). You should then confirm to UCAS online that you wish to accept your place on the programme.
- If you do not receive the exam results you expected and they do not meet the requirements of the programme, please contact the Student Advisers for advice on alternative options.
- Once you have confirmed your place on the programme, you will need to come in and complete your enrolment. Details of how to enrol will be sent to you, with instructions on what you need to do next.

6. START YOUR HE PROGRAMME!

Remember to apply as early as possible, as some programmes are popular and fill up quickly!

FINANCE AND LOANS

IF THIS IS YOUR FIRST DEGREE LEVEL PROGRAMME, YOU MAY ACCESS STUDENT FINANCE/LOANS.

The fees for programmes vary according to the source of government funding. The following is a brief guide to where you can find out more information.

Don't forget, you can call us on **0151 551 7777** for further information about the grants available. Please note, our Student Services team are not financial advisers and cannot advise you about your individual financial circumstances.

DEGREES, FOUNDATION DEGREES, HNC, HND, CERTIFICATE IN EDUCATION OR PGCE PROGRAMMES

You can apply for a student loan before you have a confirmed college or university place. To get your student finance in place for the start of term, you will need to apply by the Spring 2018 deadline.

FULL-TIME STUDENTS

The main sources of student funding for degrees, foundation degrees and HND programmes are:

- ⊕ **Tuition Fee Loans**
- ⊕ **HE Maintenance Loan**

⊕ **Tuition Fee Loans:** This non-income assessed loan covers College tuition fees and is paid direct to the College by the Student Loans Company – www.slc.co.uk.

⊕ **Maintenance loans** are used for day-to-day living costs, such as accommodation costs/rent, food and travel. They are usually paid by the Student Loans Company in three instalments, directly into your bank account.

These loans are repayable after you leave your programme and you start earning at least £21,000 per annum.

PART-TIME STUDENTS

Most part-time students will be able to apply for a **Tuition Fee Loan** to pay for their course fees, subject to the programme being at least 25% equivalent of a full-time programme. This means that you will need to complete your programme in no more than four times the amount of time it would take you to complete if you were studying full-time.

The maximum annual Tuition Fee Loan that is available to part-time students is £6,750 and is repayable when you leave your programme and start earning at least £21,000 per annum.

PREVIOUS STUDY

You will not normally be eligible for a tuition fee loan if you already hold a qualification equal to or higher than the one you intend to study for.

For further details about Student Finance, visit www.gov.uk/student-finance

HOW DO I PAY?

PROGRAMME FEES AT WIRRAL MET COLLEGE INCLUDE TUITION AND EXAMINATION FEES UNLESS OTHERWISE STATED.

There will be additional costs associated with your programme which may include field trips, DBS check, books, printing, photocopying, educational stationery and other items – please visit wmc.ac.uk/higher-education for more information.

If you are being sponsored by your employer, you must provide written evidence of this at enrolment. A letter must contain contact details of who will pay the fees, and the address where the invoice should be sent. When an employer or other organisation agrees to pay these fees, they become liable for them in full.

If you are self-funding and have to pay your own fees, you can pay the full amount at enrolment, or you can pay £80 deposit at enrolment, then pay the remaining balance by 6 x monthly instalments. You can pay by credit or debit card, cheque or cash. The fee stated on the website is per year for HE courses and your first year's fees will remain the same for each year of your HE programme at Wirral Met.

If you are taking out Student Loans e.g. from Student Finance England, we will receive electronic confirmation of the level of tuition fee/loan you have been allocated directly from the Student Loans Company. Please contact the Student Services Team on **0151 551 7777** for advice about how to apply for student

loans or visit wmc.ac.uk. You can also visit www.gov.uk/student-finance for details of how to apply for student loans.

FINANCIAL HELP FOR ACCESS TO HE AND PROFESSIONAL DEVELOPMENT PROGRAMMES

Advanced Learner Loans will give students aged 19 and over, studying eligible level 3-6 programmes, access to financial support for tuition costs from the Student Loans Company.

Loan repayments apply once you have completed your programme and earn over £21,000.

Before applying, you will need to check the programme is eligible for an Advanced Learner Loan. It's easy to apply, your household income isn't taken into account and there are no credit checks. For more information visit: www.gov.uk/advanced-learner-loan or call us on **0151 551 7777**.

NEW! STUDENT BURSARIES

Students studying on a full-time degree programme can access bursaries:

Support Bursary - £500 per annum for students with a household income below £25,000.

Access and Progression Bursary - £500 per annum for students with a household income between £25,001 and £42,600 and who have studied at Wirral Met College in the previous two years.

STUDY SUPPORT

DISABLED STUDENTS' ALLOWANCE

DISABLED STUDENTS ALLOWANCE (DSA) CAN HELP WITH EXTRA COSTS YOU MAY HAVE IN RELATION TO YOUR HE PROGRAMME AS A DIRECT RESULT OF A DISABILITY, LONG TERM HEALTH CONDITION, MENTAL HEALTH CONDITION OR SPECIFIC LEARNING DIFFICULTY E.G. DYSLEXIA.

The level of any DSA award will depend on an individual needs assessment – visit www.gov.uk/disabled-students-allowances-dsas for details or visit www.gov.uk/student-finance for more information to help you apply.

ARE YOU AN OVERSEAS STUDENT?

We welcome overseas applicants and have a specialist team to help you with your English. Call our International Office on **0151 551 7777** for details.

International students who are not native English speakers must have an IELTS (International English Language Testing System) qualification as a minimum requirement to enrol on a Higher Education programme.

Please note, this guidance was correct at time of going to print, but funding guidelines may change. Visit wmc.ac.uk/higher-education for the latest information.

STUDENTS' UNION

The Students' Union office is based at our Conway Park Campus.

- ⊕ Take part in HE specific events and activities
- ⊕ Become a Student Volunteer
- ⊕ Join our charity fund-raising events
- ⊕ Join our clubs and societies

Meet like-minded students, try something different and make your time at Wirral Met an un-missable experience!

If you would like to take an active part in the Students' Union, you can stand for election to become the next Students' Union President, Student Rep or Student Governor.

Further details are available from the Students' Union office at our Conway Park Campus.

Don't forget to get your NUS Extra student discount card!







Wirral Met College