

# FULL-TIME PROSPECTUS 2019/20



Wirral Met College



# CONTENTS

- 05 COLLEGE CAMPUSES
  - 06 WELCOME FROM THE PRINCIPAL
  - 07 INFORMATION FOR PARENTS
  - 08 QUALIFICATIONS EXPLAINED
  - 10 HOW MUCH WILL IT COST?
  - 12 WIRRAL MET – A GREAT PLACE TO STUDY
  - 14 SUPPORT FOR LEARNING
  - 16 ENGLISH FOR SPEAKERS OF OTHER LANGUAGES
- 
- COLLEGE COURSES:**
- 17 ACCESS TO HIGHER EDUCATION (HE)
  - 18 ACCOUNTANCY
  - 20 ANIMAL MANAGEMENT
  - 22 ART, CREATIVE MEDIA & MUSIC
    - Art & Design
    - Creative Media inc Games Design
    - Music
  - 28 CHILDCARE & EARLY YEARS EDUCATION
  - 30 COMPUTING & IT
  - 32 CONSTRUCTION & THE BUILT ENVIRONMENT
    - Brickwork, Carpentry & Joinery, Electrical,
    - Painting, Design & Decoration, Plastering,
    - Plumbing & Gas, Professional Studies
  - 36 ENGINEERING & MOTOR VEHICLE STUDIES
    - Engineering
    - Motor Vehicle Studies
  - 40 HAIRDRESSING & BEAUTY THERAPY
    - Hairdressing
    - Beauty Therapy
  - 44 HEALTH & SOCIAL CARE
  - 46 HOSPITALITY & CATERING
  - 48 LOGISTICS & WAREHOUSING
  - 50 PUBLIC & UNIFORMED SERVICES
  - 52 SKILLS FOR LIFE & WORK
    - Prep 4 Life
    - Prince's Trust Team
    - Progression into Further Education
  - 56 SCIENCE
  - 58 SPORT, FITNESS & OUTDOOR EDUCATION
  - 60 TRAVEL & TOURISM
- 
- 62 HOW DO I APPLY?
  - 63 HIGHER EDUCATION COURSES

# WIRRAL MET COLLEGE IS A GREAT PLACE TO STUDY!

- ⊕ Become a Student Volunteer
- ⊕ Join the Students' Union and become a Course Rep
- ⊕ Organise charity fund raising events
- ⊕ Take part in trips and sporting events

Don't forget to get your NUS Extra student discount card (or NUS Extra Apprentice card) from the Students' Union.

## OPEN EVENING DATES FOR 2018/19

- Thursday 11th October 2018, 4.30pm – 7.00pm. All campuses
- Thursday 17th January 2019, 4.30pm – 7.00pm. All campuses
- Thursday 21st March 2019, 4.30pm – 7.00pm. All campuses

Check out our website for the dates of our Open Evenings. You can also call in to our Conway Park Campus Monday to Friday, and speak to one of our Student Advisers to find out more about our courses.



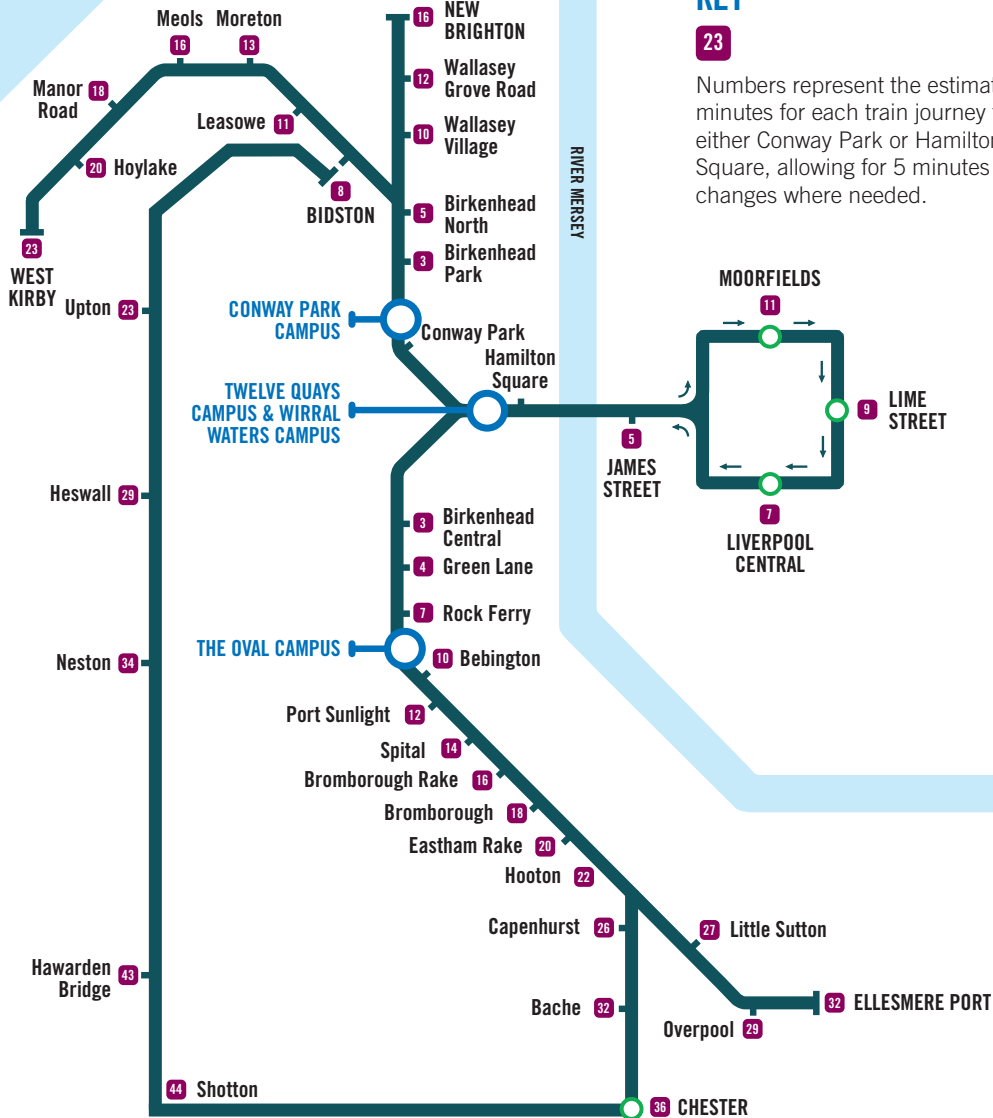
# WIRRAL MET... YOUR LOCAL COLLEGE

(Source of information: merseyrail.org)

**16-18?**  
**ASK US ABOUT OUR  
FREE TRAVEL PASS**

## KEY

**23**  
Numbers represent the estimated minutes for each train journey to either Conway Park or Hamilton Square, allowing for 5 minutes for changes where needed.



Visit [wmc.ac.uk](http://wmc.ac.uk) for maps, and travel directions.

# COLLEGE CAMPUSES



## CONWAY PARK CAMPUS

Europa Boulevard, Conway Park  
Birkenhead, CH41 4NT

**TEL: 0151 551 7777**

*A short walk from Birkenhead bus station  
opposite Conway Park train station*



## TWELVE QUAYS CAMPUS

Morpeth Dock, Shore Road  
Birkenhead, CH41 1AG

**TEL: 0151 551 7777**

*A few minutes from Woodside Ferry Terminal  
and Birkenhead Hamilton Square train station*



## THE OVAL CAMPUS

Old Chester Road, Bebington  
CH63 7LH

**TEL: 0151 551 7777**

*A short walk from Bebington train station  
next to The Oval Leisure Centre*



## WIRRAL WATERS CAMPUS

Tower Road, Birkenhead  
CH41 1AA

**TEL: 0151 551 7777**

*A few minutes walk from Seacombe Ferry  
Terminal or Hamilton Square train station*

# WELCOME FROM THE PRINCIPAL

**IF YOU ARE READING THIS, YOU ARE LIKELY TO BE CONSIDERING THE NEXT IMPORTANT STEP IN CONTINUING YOUR EDUCATION AND TRAINING. AT WIRRAL MET COLLEGE, WE HELP THOUSANDS OF PEOPLE EVERY YEAR TO MAKE THIS LIFE CHANGING DECISION TO ACHIEVE THEIR AMBITIONS.**

Our approach is to work with you to explore your dream career then create a personal learning plan to help you succeed. This prospectus will provide you with a glimpse of life at Wirral Met. With our recent investment of £21 million to create new, state of the art learning facilities, there has never been a better time to join us.

We work with over a thousand employers and employability skills and work experience are important components of your programme. If you are aged 16 to 18 your study programme is free but, whatever your age, we can provide you with guidance to access the range of bursary schemes and financial support to help you with your studies. We hold the matrix quality standard, which confirms that our advice is impartial and designed to meet your personal aspirations and circumstances.

Your personal learning journey will be designed specifically for you and it may lead you to university, an apprenticeship or a job. In addition to working towards your career goals, you will also be able to get involved in many other aspects of college life.

Our Students' Union helps to develop college strategy, organise college, community and charity events and we would be delighted if you choose to get involved.

If you are prepared to work hard and commit to developing your education and skills, then our team of over 500 staff are ready to help you succeed. Don't just take my word for it, come along to one of our open days or events and see for yourself!

**Sue Higginson**  
Principal



# INFORMATION FOR PARENTS

## WE GREATLY VALUE THE CONTACT WE HAVE WITH THE PARENTS, GUARDIANS AND CARERS OF STUDENTS AGED 16-18.

Leaving school and starting college is a very important decision, and, as a parent or guardian, you will want to make sure your son or daughter has made the right choice.

We hope you will join us in supporting and encouraging your son/daughter to take their studies seriously, attend regularly, behave appropriately, be punctual and hand work in on time.

We will provide you with information on their progress, with regular opportunities to talk to staff about any issues or concerns you may have. Please call **0151 551 7777** if you do have any concerns.

## IMPARTIAL ADVICE AND GUIDANCE

Our information, advice and guidance service holds the matrix standard, a national quality award, which demonstrates that we provide a high standard of impartial information, advice and guidance to help you explore options and plan the right approach for your career.

The College's career strategy and careers education, information, advice and guidance programme is available at [wmc.ac.uk](http://wmc.ac.uk).



# QUALIFICATIONS EXPLAINED

WIRRAL MET COLLEGE HAS A WIDE VARIETY OF STUDY OPTIONS TO CHOOSE FROM:

## 1. STUDY PROGRAMMES

As a student at Wirral Met your study programme is tailor-made to meet your individual needs and career ambitions. Your study programme is made up of lots of different elements so that by the end of your time at college you will have gained work experience, valuable skills and a main qualification.

### YOUR STUDY PROGRAMME WILL INCLUDE:

#### MAIN QUALIFICATION

You will spend most of your time at college studying one main qualification in your chosen subject area (e.g. NVQ Professional Cookery Diploma).

#### TUTORIAL

You will have a personal tutor to work with you to ensure you have a positive experience at college.

#### MATHS AND ENGLISH

If you have not yet achieved a grade 9-4 (formerly A\*-C) in GCSE maths and/or English, you will continue to study these subjects at college. Depending on your grade, you will work towards a GCSE and/or Functional Skills qualification in English and/or maths.

#### NON-STUDY ACTIVITIES

You will have the opportunity to take part in a range of activities such as sports and trips, voluntary work, fund raising and charity work. When you enrol on a course at Wirral Met you will automatically become part of the Students' Union (unless you decide to opt out). This voluntary body is run by students, for students.

#### WORK EXPERIENCE & EMPLOYABILITY SKILLS

You will have the opportunity to undertake high quality, meaningful work experience and/or work related skills development.

For information about study programmes, traineeships or apprenticeships, call our Student Advisers on 0151 551 7777, call in to see them at our Conway Park Campus or visit [wmc.ac.uk](http://wmc.ac.uk) for full details.



## 2. TRAINEESHIPS

Traineeships are designed to help young people gain the necessary work skills and experience to progress to an apprenticeship or job including customer service skills and basic health and safety in the workplace. They are a partnership between the employer and the College and involve high quality work experience, English, maths and a period of work preparation training such as developing interpersonal skills, CVs, job search and interview skills.

### YOU WILL BE ELIGIBLE IF YOU:

- ⊕ want to get a job and you have limited work experience
- ⊕ are aged 16-24 and not yet achieved a full level 3 qualification (you can have up to 1 A Level)
- ⊕ you have a reasonable chance of being ready for employment or an apprenticeship within six months of starting your traineeship

## 3. APPRENTICESHIPS

An apprenticeship is a job with training that develops your skills and knowledge, whilst you earn. We work with many employers who want to recruit apprentices in a wide variety of jobs and sectors. If this is for you, contact us to find out how you can become an apprentice.

### APPRENTICESHIPS ARE AVAILABLE AT THE FOLLOWING LEVELS WITH A WIDE RANGE OF QUALIFICATIONS:

- ⊕ Level 2 (equivalent to 5 good GCSEs)
- ⊕ Level 3 (equivalent to 2 good A Levels)
- ⊕ Level 4 (which can include a Higher Education qualification e.g. Higher National Certificate)
- ⊕ Level 5 (which can include a Higher Education qualification e.g. Higher National Diploma)

If you want to become an apprentice, you must apply for an apprenticeship job opportunity rather than apply to College. Visit [wmc.ac.uk/apprenticeships](http://wmc.ac.uk/apprenticeships) for details of apprenticeships and current vacancies, visit [gov.uk/apply-apprenticeship](http://gov.uk/apply-apprenticeship) or call our Student Advisers for advice on 0151 551 7777.

# HOW MUCH WILL IT COST?

**MOST STUDENTS AGED 16-18 CAN ENROL ON A STUDY PROGRAMME FOR FREE, AS THEIR FEES ARE FUNDED BY THE EDUCATION AND SKILLS FUNDING AGENCY (ESFA).**

If you are aged 19+ you may not have to pay course fees if you are claiming certain benefits, or studying your first full level 2 or if you are aged 19-23, studying your first full level 3 course (conditions apply). If you do pay fees, you may be entitled to financial help towards the payment of your fees, travel costs, childcare, residential fees or equipment required for your course (conditions apply). You may also be eligible for an Advanced Learner Loan.

Traineeships are also free and fully funded by the Education and Skills Funding Agency (ESFA) for 16-24 year olds.

For more information on fees and financial support please contact the Student Services team on **0151 551 7777** or visit **wmc.ac.uk** for details.

## FINANCIAL SUPPORT

If you feel that your financial circumstances may stop you learning, there is a range of financial assistance available including:

- ⊕ **16-18 Bursary Fund\***
- ⊕ **Free college meals for 16-18s\***
- ⊕ **19+ Learner Support Fund\***
- ⊕ **Advanced Learner Loan\***
- ⊕ **Care to learn\***
- ⊕ **20+ Childcare Support\***
- ⊕ **Free transport for 16-18s\*\***

\*conditions apply

## NEED HELP CHOOSING YOUR COURSE?

If you need help finding the right course, or you need more information, please call **0151 551 7777**, visit **wmc.ac.uk**, or call in to our Conway Park Campus and speak to one of our Student Advisers.

Wirral Met College's Information, Advice and Guidance Service holds the national matrix quality award, which means we are committed to giving you impartial advice and guidance. Our professionally qualified Student Advisers offer a friendly, confidential and welcoming service to help you make the right choices for your career.

Our Student Advisers are available by phone between 9:00am-4:30pm Monday-Friday. Alternatively, drop in to our Conway Park Campus Monday-Friday, 10:00am to 4:00pm (all year round), with late opening times on Wednesdays and Thursdays (term time only) until 6.30pm.



# WHICH LEVEL WILL I START AT?

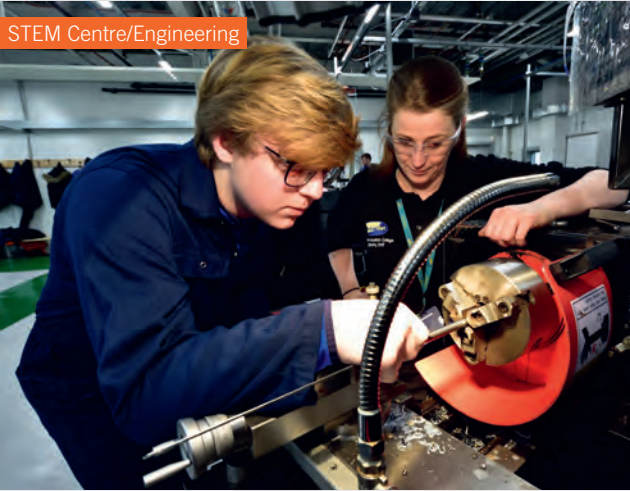
WIRRAL MET COLLEGE HAS A PLACE FOR EVERY STUDENT, REGARDLESS OF YOUR STARTING POINT AND CHOSEN CAREER PATH. AS A GUIDE, THE LIKELY STARTING POINTS ARE SET OUT BELOW.

CURRENT QUALIFICATIONS YOU HAVE:	LIKELY STARTING POINT AT COLLEGE:
<b>NO GCSEs</b>	Entry Level 1, 2, 3, Traineeships, Apprenticeships or Progression into Further Education courses
<b>JUST A FEW GCSEs AT GRADE 3/2 (FORMERLY GRADE E)</b>	<b>Level 1 study programmes</b> <ul style="list-style-type: none"> <li>• NVQ Level 1</li> <li>• BTEC Certificate/Award</li> <li>• Traineeships, Apprenticeships, Progression into Further Education or Prince's Trust programmes</li> </ul>
<b>3 GCSEs AT GRADES 9-3 (FORMERLY GRADES A*-D) AND ABOVE</b>	<b>Level 2 study programmes /apprenticeships</b> <ul style="list-style-type: none"> <li>• NVQ Level 2</li> <li>• BTEC Certificate/Diploma</li> <li>• Traineeship</li> <li>• Level 2 Apprenticeship</li> <li>• Pre-Access (students aged 19+)</li> </ul>
<b>4-5 GCSEs AT GRADES 9-4 (FORMERLY GRADES A*-C), LEVEL 2 (INTERMEDIATE) APPRENTICESHIP</b>	<b>Level 3 study programmes /apprenticeships</b> <ul style="list-style-type: none"> <li>• NVQ Level 3</li> <li>• BTEC Certificate/Diploma</li> <li>• Level 3 Apprenticeship</li> <li>• Access to Higher Education (students aged 19+)</li> </ul>
<b>A LEVEL, AS LEVEL, BTEC EXTENDED DIPLOMA, NVQ LEVEL 3, LEVEL 3 (ADVANCED) APPRENTICESHIP</b>	<b>Level 4, 5 &amp; 6 courses /apprenticeships</b> <ul style="list-style-type: none"> <li>• Levels 4, 5, 6 Higher National Certificate/Diploma (HNC/D)</li> <li>• Level 4/5 Higher Apprenticeship &amp; Degree Apprenticeships</li> <li>• Foundation Degree (FD)</li> <li>• Bachelor Degree (BA/BSc)</li> <li>• Professional Qualifications</li> </ul>

This is only a guide to the different qualifications at each level and we may offer other qualifications to suit your needs. To discuss your options in detail, please contact our Student Advisers. You can also take a look at the National Careers Service website for careers information – visit [www.nationalcareersservice.direct.gov.uk](http://www.nationalcareersservice.direct.gov.uk)

# WIRRAL MET OFFERS EXCELLENT FACILITIES

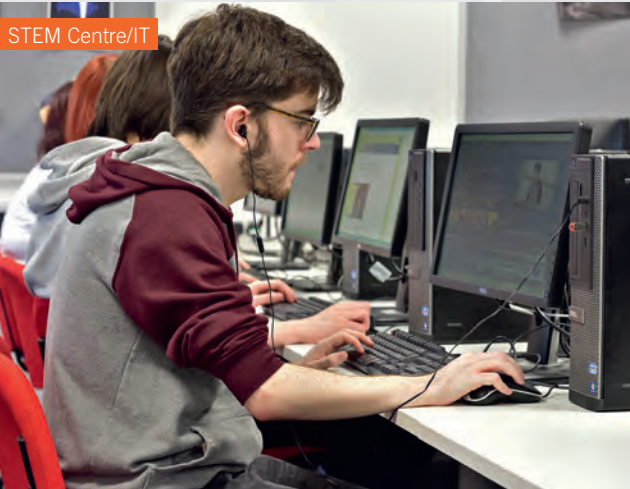
STEM Centre/Engineering



Logistics Centre



STEM Centre/IT



Gym - Oval Campus





Hair & Beauty Salons



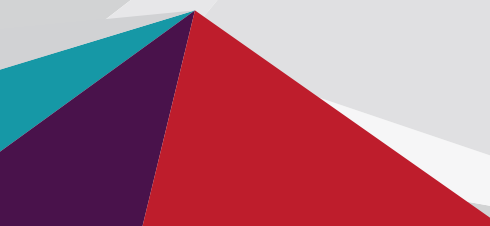
Training Kitchens & Restaurant



Construction Centre



STEM Centre/Science



# SUPPORT FOR LEARNING

We want you to enjoy your time at college and we are here to help. If you need support, just let us know!

## PASTORAL SUPPORT MENTORS SUPPORT YOU WITH:

- ⊕ Personal issues
- ⊕ Problems relating to finance
- ⊕ Childcare
- ⊕ Accommodation
- ⊕ Time management
- ⊕ Study support to help you keep up with your work

For more details, speak to the Student Services team - **0151 551 7777**



# ADDITIONAL LEARNING SUPPORT (ALS)

**THE ADDITIONAL LEARNING SUPPORT TEAM ENABLES STUDENTS TO BE AS SUCCESSFUL AS POSSIBLE. WE HAVE A TEAM OF OVER 60 HIGHLY TRAINED AND QUALIFIED STAFF, INCLUDING SPECIALIST TUTORS, COMMUNICATION SUPPORT WORKERS AND LEARNING SUPPORT ASSISTANTS.**

We work with students across all subject areas and levels. We provide support for a wide range of needs, including:

- ⊕ Dyslexia/Dyspraxia
- ⊕ Moderate/Complex Learning Difficulties
- ⊕ Autism Spectrum Condition
- ⊕ Physical Difficulties
- ⊕ ADHD
- ⊕ Mental Health and Well-being
- ⊕ Blind or Partially Sighted
- ⊕ D/deaf or Hard of Hearing

You will receive a confidential assessment from a qualified, specialist tutor. They can assess your needs, and work with you to decide what kind of support will help you. This may simply be the loan of some specialist equipment or software. It may be some additional teaching, or perhaps one-to-one support in the classroom or around the college.

## CONTACT US!

If you would like to speak to someone about your needs, in confidence, please call **0151 551 7777**.



# ENGLISH FOR SPEAKERS OF OTHER LANGUAGES

**IF ENGLISH IS NOT YOUR FIRST LANGUAGE, THESE COURSES WILL DEVELOP YOUR READING, WRITING AND LISTENING SKILLS IN ENGLISH.**

Join an English for Speakers of Other Languages (ESOL) study programme:

COURSE	LEVEL	CODE
ESOL Beginners	Entry 1	X001
ESOL Skills for Life Awards	Entry 2	X002
ESOL Skills for Life Awards	Entry 3	X003
ESOL Skills for Life Awards	1	X005
ESOL Skills for Life Awards	2	X006

For further information, contact us on 0151 551 7777 or visit [wmc.ac.uk](http://wmc.ac.uk)

## ARE YOU AN INTERNATIONAL STUDENT?

Contact us on **0151 551 7777**, or visit our international page at [wmc.ac.uk](http://wmc.ac.uk), for more details.

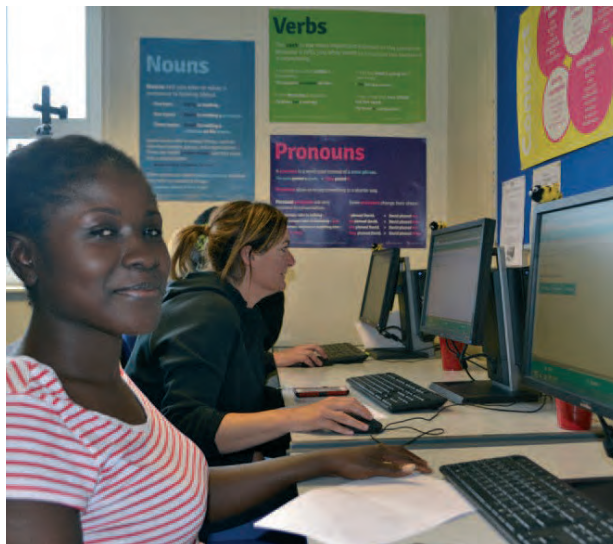




# ACCESS TO HIGHER EDUCATION (HE)

Access courses are designed to help adults return to learning and progress onto Degree and higher education courses. These courses will prepare you to study at degree level and lead to careers in:

- ⊕ Art & Design
- ⊕ Midwifery
- ⊕ Nursing
- ⊕ Psychology
- ⊕ Science
  - Biomedical Science
  - Science
- ⊕ Sociology & Criminology
- ⊕ Social Work
- ⊕ Teaching



Are you aged 19+, not quite ready, or do not have the grades to progress to university level or Higher Education (HE) courses? Join an Access or Pre-Access to HE course.

For further information, call our Student Advisers on **0151 551 7777** or visit the Access to HE page at [wmc.ac.uk](http://wmc.ac.uk)

Wirral Met College offers a wide range of university level courses in partnership with prestigious universities including the University of Chester, University of Liverpool and University of Central Lancashire. Visit [wmc.ac.uk/higher-education](http://wmc.ac.uk/higher-education), or call **0151 551 7777** to request your copy of the higher education prospectus.



# ACCOUNTANCY

**ASSOCIATION OF ACCOUNTING TECHNICIANS (AAT) QUALIFICATIONS ARE INTERNATIONALLY RECOGNISED. THEY ARE BASED ON PRACTICAL, REAL-WORLD ACCOUNTING KNOWLEDGE AND YOU WILL LEARN ESSENTIAL BUSINESS AND FINANCE SKILLS THAT YOU CAN PUT INTO USE FROM DAY ONE.**

Accountancy study programmes delivered at our **Conway Park** Campus include:

COURSE	LEVEL	CODE
<b>AAT Foundation Certificate in Accounting (fast-track)</b>	2	D054
<b>AAT Advanced Diploma in Accounting (fast-track)</b>	3	D063

Your study programme is tailored to your individual needs and usually lasts 2 years. See page 8 for details. Levels 2, 3 and 4 apprenticeships in Accounting are also available – visit [wmc.ac.uk/apprenticeships](http://wmc.ac.uk/apprenticeships) for full details.

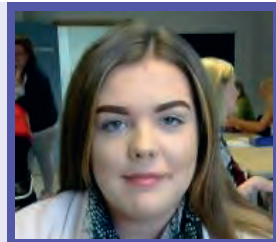
## WHERE NEXT?

You can apply for an apprenticeship or job in accounting, or continue into Higher Education and study on a level 4 course.

If you have decided which course you want to study, apply online at [wmc.ac.uk](http://wmc.ac.uk). If not, get in touch with our Student Advisers who will help you.

## WHERE ARE THEY NOW?

**Hannah Grieg** is currently doing an apprenticeship in accounting and is an accounts assistant at A1-CBISS Limited, based in Tranmere. She would like to gain a level 3 qualification in AAT and continue her career at A1-CBISS once she has completed her apprenticeship with Wirral Met.”





# INDUSTRY OPPORTUNITIES

CAREERS INCLUDE:

**ACCOUNTANT, BOOK-KEEPER,  
FINANCE ASSISTANT, SELF EMPLOYMENT**



**YOUR EARNING  
POTENTIAL:**

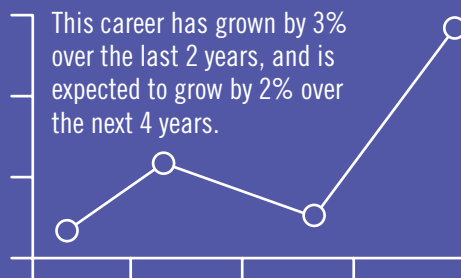


Chartered and Certified Accountants normally earn...

**£38,786 PER YEAR**

Finance Assistants could earn between...

**£15-36,000 PER YEAR**



Sources: [nationalcareersservice.direct.gov.uk](http://nationalcareersservice.direct.gov.uk) | [wmc.emsicareercoach.co.uk](http://wmc.emsicareercoach.co.uk)

# ANIMAL MANAGEMENT

OUR ANIMAL MANAGEMENT DEPARTMENT HAS A DEDICATED TEAM OF EXPERIENCED TEACHERS TO HELP YOU WORK TOWARDS YOUR DREAM CAREER IN THE ANIMAL MANAGEMENT SECTOR. WE COMBINE OUR OWN COLLECTION OF ANIMALS WITH EXTERNAL VISITS TO GIVE YOU ALL THE EXPERIENCE AND TRAINING YOU NEED TO PROGRESS TO UNIVERSITY OR A JOB. THE TWELVE QUAYS CAMPUS IS HOME TO A RANGE OF ANIMALS, SUCH AS DWARF RABBITS, GUINEA PIGS, DWARF AND SYRIAN HAMSTERS, BUDGIES, TERRAPINS, SNAKES, A PYTHON, BEARDED DRAGONS, GECKOS, A HORNED FROG, FIRE BELLIED TOADS, STICK INSECTS AND MORE.

Study programmes delivered at our **Twelve Quays Campus** include:

COURSE	LEVEL	CODE
Introduction to Animal Management and Wildlife Ecology	Entry 3	S207
Animal Management and Wildlife Ecology	1	S119
BTEC Animal Management First Diploma	2	S102
BTEC Animal Management 90 Credit Diploma	3	S122

Your study programme is tailored to your individual needs and usually lasts for 2 years. See page 8 for details.

## WHERE NEXT?

Students progress into jobs once they have completed their full-time study programmes.

If you have decided which course you want to study, apply online at [wmc.ac.uk](http://wmc.ac.uk). If not, get in touch with our Student Advisers who will help you.

## MEET THE STUDENT

**Jessica O'Mahoney** is studying a level 3 Diploma in Animal Management at Wirral Met. She hopes to pursue a career working as a Welfare Officer in the future. Jessica says, "I am truly enjoying the course. It has been such a tremendous experience and has helped me to expand my knowledge of animal management."





# INDUSTRY OPPORTUNITIES

CAREERS INCLUDE:

**ANIMAL WELFARE WORKER,  
DOG GROOMER, VETERINARY  
NURSE, ZOO KEEPER**



**YOUR EARNING  
POTENTIAL:**

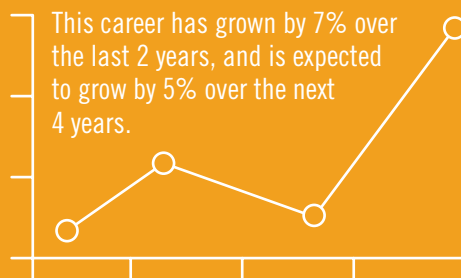


Qualified Veterinary Nurses can earn between...

**£14-24,000 PER YEAR**

Animal Care Services Occupations can earn from...

**£12-20,000 PER YEAR**



Sources: [nationalcareersservice.direct.gov.uk](http://nationalcareersservice.direct.gov.uk) | [wmc.emsicareercoach.co.uk](http://wmc.emsicareercoach.co.uk)

**WIRRAL MET'S ART SCHOOL HAS A REPUTATION FOR QUALITY AND CREATIVITY. A TEAM OF TALENTED STAFF, WHO ARE DEDICATED TO HELPING YOU EXPLORE AND HARNESS YOUR CREATIVE TALENT, COMPLEMENTS THE EXCELLENT FACILITIES.**

Study programmes delivered at our **Twelve Quays Campus** include:

COURSE	LEVEL	CODE
UAL Art and Design Diploma	1	A062
UAL Art and Design Diploma	2	A063
UAL Art and Design Diploma	3	A072
UAL Art and Design Extended Diploma	3	A064
UAL Art and Design Pre Degree Foundation Diploma	3	A016

All our courses are validated by the prestigious University of Arts London (UAL). Your study programme is tailored to your individual needs and usually lasts for 2 years. See page 8 for details.

## WHERE NEXT?

You can progress into employment or continue your studies at a higher level and do a degree course such as the BA (Hons) Fine Art, the BA (Hons) Illustration with Animation or the BA (Hons) Games Art and Design at Wirral Met College. These courses are validated by the University of Chester.

Working in Partnership with



If you have decided which course you want to study, apply online at [wmc.ac.uk](http://wmc.ac.uk). If not, get in touch with our Student Advisers who will help you.

## WHERE ARE THEY NOW?

**Anthony Brown** studied art and design at Wirral Met and is now a self-employed professional artist. Anthony started his career working within the magazine publishing industry as a graphic artist/illustrator until he became an artist. He is currently completing artwork that will be used in the new development of Liverpool train station in 2018.

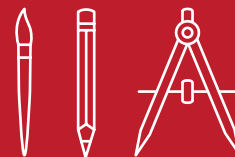




# INDUSTRY OPPORTUNITIES

CAREERS INCLUDE:

**ARTIST, GRAPHIC DESIGNER,  
INTERIOR DESIGNER**



**YOUR EARNING  
POTENTIAL:**



Graphic Designers' salaries start at around...

**£19-40,000 PER YEAR**

Experienced Interior Designers can earn around...

**£25-45,000 PER YEAR**



Sources: [nationalcareersservice.direct.gov.uk](http://nationalcareersservice.direct.gov.uk) | [wmc.emsicareercoach.co.uk](http://wmc.emsicareercoach.co.uk)

**IF YOU WOULD LIKE A CAREER IN MEDIA, WORKING IN RADIO, TELEVISION, FILM OR WEB-BASED MEDIA, THIS IS THE STUDY PROGRAMME FOR YOU. FILM MAKING, SCRIPT WRITING, PHOTOGRAPHY AND DEVELOPING WEB-BASED MEDIA ARE JUST SOME OF THE THINGS THAT OUR SPECIALIST TUTORS WILL GUIDE YOU THROUGH.**

Study programmes delivered at our **Twelve Quays Campus** include:

COURSE	LEVEL	CODE
<b>BTEC Creative Digital Media Production Diploma</b>	2	P075
<b>BTEC Creative Media Production 90 Credit Diploma</b>	3	P067
<b>BTEC Creative Media Production Extended Diploma</b>	3	P030
<b>BTEC Creative Media Production 90 Credit Diploma in Games Design (NEW FOR 2019)</b>		

Your study programme is tailored to your individual needs and usually lasts for 2 years. See page 8 for details.

## WHERE NEXT?

Many students progress to higher education courses including degrees and Higher National Certificates (HNC) or Higher National Diplomas (HND) such as the HNC/D in Photography at Wirral Met College. Others move into jobs in radio, television, film or marketing and/or self-employment.

If you have decided which course you want to study, apply online at [wmc.ac.uk](http://wmc.ac.uk). If not, get in touch with our Student Advisers who will help you.

## WHERE ARE THEY NOW?

**Jennifer Oliver** studied level 3 Creative Media at Wirral Met College. She really enjoyed the course and explained, “We were able to learn new things, not only about creative media but lots of different aspects of the subject which I will find really valuable for the future.” Jennifer enjoyed the photography section of the creative media course and has progressed on to study HND Photography at Wirral Met.







# INDUSTRY OPPORTUNITIES

CAREERS INCLUDE:

**COMPUTER GAMES DEVELOPERS, EDITOR,  
PHOTOGRAPHER, RADIO PRODUCER, WEB DESIGNER**



## YOUR EARNING POTENTIAL:



Starting salaries for Photographers,  
Audio-visual and Broadcasting  
Equipment Operators are usually around... **£24,863 PER YEAR**

Experienced and skilled Programmers  
or Software Development  
Professionals can earn between... **£22-57,000 PER YEAR**



Sources: [nationalcareersservice.direct.gov.uk](http://nationalcareersservice.direct.gov.uk) | [wmc.emsicareercoach.co.uk](http://wmc.emsicareercoach.co.uk)

**THE MODERN FACILITIES AT OUR TWELVE QUAYS CAMPUS INCLUDE MUSIC AND RECORDING STUDIOS. YOU WILL DEVELOP YOUR OWN UNIQUE STYLE AND CREATIVE TALENTS, WHILST DEVELOPING YOUR KNOWLEDGE OF MUSIC AND TECHNOLOGY.**

Study programmes delivered at our **Twelve Quays Campus** include:

COURSE	LEVEL	CODE
<b>UAL Music Diploma</b>	1	P079
<b>UAL Music First Diploma</b>	2	P010
<b>UAL Music/Music Technology Diploma</b>	3	P065
<b>UAL Music Extended Diploma</b>	3	P015

Your study programme is tailored to your individual needs and usually last for 2 years. See page 8 for details.

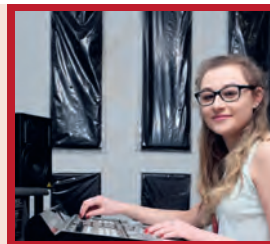
## WHERE NEXT?

Many students progress into jobs and/or self-employment once they have completed their full-time study programmes. Some level 3 students progress onto Higher Education courses at Wirral Met College, or they will go to university to study a degree.

If you have decided which course you want to study, apply online at [wmc.ac.uk](http://wmc.ac.uk). If not, get in touch with our Student Advisers who will help you.

## MEET THE STUDENT

**Kaya** is currently studying a level 3 extended diploma in music. She said the showcases and performances she has taken part in at Wirral Met have taken her 'out of her comfort zone at times' and because of this she has more confidence. Kaya is a keen singer songwriter and is eager to pursue this career path when she completes her course.





# INDUSTRY OPPORTUNITIES

CAREERS INCLUDE:

**SOUND ENGINEER, MUSICIAN,  
MUSIC TEACHER, DJ, ENTERTAINER**



**YOUR EARNING  
POTENTIAL:**



Sound engineer salaries start at around...

**£15,000 PER YEAR**

With experience this can rise up to...

**£40,000 PER YEAR**



Sources: [nationalcareersservice.direct.gov.uk](http://nationalcareersservice.direct.gov.uk) | [wmc.emsicareercoach.co.uk](http://wmc.emsicareercoach.co.uk)

# CHILDCARE & EARLY YEARS EDUCATION

**PREPARING FOR A CAREER DEDICATED TO THE CARE AND DEVELOPMENT OF CHILDREN IS VERY REWARDING. YOU WILL LEARN THE THEORETICAL SIDE OF CHILD DEVELOPMENT AND EARLY YEARS EDUCATION, WHILST DEVELOPING A RANGE OF PRACTICAL SKILLS AND EXPERIENCE.**

Study programmes delivered at our **Twelve Quays Campus** include:

COURSE	LEVEL	CODE
<b>CACHE Caring for Children Diploma</b>	1	N067
<b>CACHE Introduction to Early Years Education and Care Certificate</b>	2	N088
<b>CACHE Caring for Children and Young People Certificate</b>	2	N092
<b>CACHE Certificate in Childcare and Education (Early Years Educator)</b>	3	N098

Your study programme is tailored to your individual needs and usually lasts 2 years. See page 8 for details. We have a variety of apprenticeships available at levels 2 and 3 – visit [wmc.ac.uk/apprenticeships](http://wmc.ac.uk/apprenticeships) for full details.

## WHERE NEXT?

Many students progress into jobs or an apprenticeship after completing their level 1 or 2 study programmes. Students completing their level 3 award can also progress on to study at degree level.

If you have decided which course you want to study, apply online at [wmc.ac.uk](http://wmc.ac.uk). If not, get in touch with our Student Advisers who will help you.

## WHERE ARE THEY NOW?

**Emma's** journey has seen her progress from a level 1 to level 3 in Childcare. During the final year of her course, Emma received a 'Student of the Year' award and achieved outstanding results not only in the vocational area, but also in English. Emma is now employed at 'Auntie Jayne's House', a day nursery in Wirral.





# INDUSTRY OPPORTUNITIES

CAREERS INCLUDE:

**CHILD-MINDER, CLASSROOM ASSISTANT,  
NANNY, NURSERY WORKER, TEACHER**



**YOUR EARNING  
POTENTIAL:**

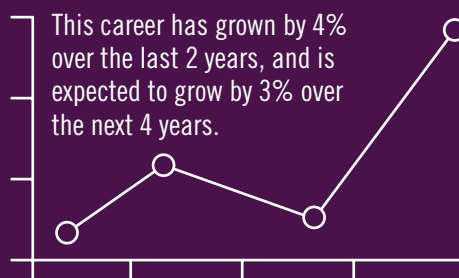


Qualified and experienced Nursery Workers can earn between...

**£14-24,000 PER YEAR**

Classroom Assistants can earn between...

**£15-24,000 PER YEAR**



Sources: [nationalcareersservice.direct.gov.uk](http://nationalcareersservice.direct.gov.uk) | [wmc.emsicareercoach.co.uk](http://wmc.emsicareercoach.co.uk)

# COMPUTING & IT

OUR COMPUTING DEPARTMENT HAS DESIGNED COURSES AT WIRRAL MET TO BRING TO LIFE THIS QUICKLY EVOLVING INDUSTRY WITH ACCESS TO THE LATEST TECHNOLOGY INCLUDING DRONES, SOFTWARE, IT FACILITIES AND VIRTUAL LEARNING TOOLS. YOU WILL STUDY IN OUR INSPIRING SCIENCE, TECHNOLOGY, ENGINEERING AND MATHS (STEM) CENTRE AND OUR EXPERIENCED TEACHING TEAM WILL SUPPORT YOU IN LEARNING ABOUT ALL ASPECTS OF THIS DYNAMIC AND INNOVATIVE SECTOR.

Study programmes delivered at our **Twelve Quays Campus** include:

COURSE	LEVEL	CODE
Digital and Computing Technologies – Introduction	1	C054
Digital and Computing Technologies – Intermediate	2	C053
Digital and Computing Technologies Extended Certificate	3	C096
Digital and Computing Technologies Foundation Diploma	3	C097
Digital and Computing Technologies Diploma	3	C095

Your study programme is tailored to your individual needs and usually lasts 2 years. See page 8 for details. Apprenticeships at levels 2 and 3 are also available – visit [wmc.ac.uk/apprenticeships](http://wmc.ac.uk/apprenticeships) for full details.

## WHERE NEXT?

Level 3 students progress into jobs or Higher Education; you can also study towards the Foundation Degree in Computer Science or the BA (Hons) Illustration with Animation Degree at Wirral Met College. These courses are validated by the University of Chester.

Working in Partnership with



University of  
Chester

If you have decided which course you want to study, apply online at [wmc.ac.uk](http://wmc.ac.uk). If not, get in touch with our Student Advisers who will help you.

## WHERE ARE THEY NOW?

**Stuart Williams** began a Digital and Computing Technologies Foundation Diploma at Wirral Met and progressed to a Level 3 Extended Diploma. He is now employed with Wirral Met as an IT Technician.





# INDUSTRY OPPORTUNITIES

CAREERS INCLUDE:

**NETWORK ENGINEERS, SOFTWARE DEVELOPERS, MULTIMEDIA DEVELOPERS**



**YOUR EARNING POTENTIAL:**



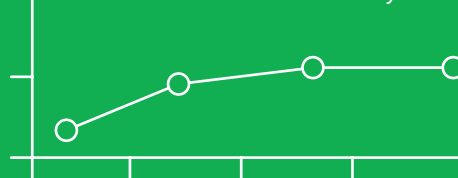
New software developers generally start around...

**£22,406 PER YEAR**

Highly experienced software developers can earn as much as...

**£57,252 PER YEAR**

This career has remained the same over the last 2 years, and is expected to remain the same over the next 4 years.



Sources: [nationalcareersservice.direct.gov.uk](http://nationalcareersservice.direct.gov.uk) | [wmc.emsicareercoach.co.uk](http://wmc.emsicareercoach.co.uk)

# CONSTRUCTION & THE BUILT ENVIRONMENT

**CONSTRUCTION IS USED TO DESCRIBE A VARIETY OF TRADES AND CAREER CHOICES, WHICH CAN LEAD TO SENIOR TECHNICAL AND MANAGEMENT POSITIONS.**

Our £11m Wirral Waters Campus in Birkenhead is dedicated to the Construction industry. You will benefit from learning practical skills in our outstanding facilities, whilst also developing your theoretical knowledge and understanding, supported by our tutors who have substantial commercial experience and professional expertise.

Study programmes delivered at our **Wirral Waters Campus** include:

## CONSTRUCTION & THE BUILT ENVIRONMENT – ENTRY LEVEL

COURSE	LEVEL	CODE
Introduction to Construction Certificate	Entry 3	R261
Basic Construction Skills Certificate	1	R267

## BRICKWORK

COURSE	LEVEL	CODE
Bricklaying Certificate	1	R076
Bricklaying Diploma	2	R077

## WHERE ARE THEY NOW?

**Deanna Robinson** studied towards the Level 2 Painting and Decorating diploma. She has secured an Apprenticeship at a local painting contractor, 'Whittle Hankinson'. Deanna explained she travels nationwide with the company specialising in decorative painting and said, "The apprenticeship has given me the courage to start a decorating business when I finish."





## CARPENTRY & JOINERY

COURSE	LEVEL	CODE
Carpentry and Joinery Diploma	1	R079
Bench Joinery Diploma	2	R265
Site Carpentry Diploma	2	R080

Level 2 and level 3 apprenticeships in Wood Occupations are also available – visit [wmc.ac.uk/apprenticeships](http://wmc.ac.uk/apprenticeships) for full details.

## ELECTRICAL

COURSE	LEVEL	CODE
Electrical Installation Studies Diploma	1	R063
Electrical Installation Studies Diploma	2	R212
Electrical Installation Studies Diploma	3	R213

A level 3 apprenticeships in Electrical Installation are also available – visit [wmc.ac.uk/apprenticeships](http://wmc.ac.uk/apprenticeships) for full details.

## PAINTING, DESIGN & DECORATION

COURSE	LEVEL	CODE
Painting and Decorating Certificate	1	R073
Painting and Decorating Diploma	2	R074

## PLASTERING

COURSE	LEVEL	CODE
Plastering Certificate	1	R263
Plastering Diploma	2	R105
Plastering Diploma	3	R072

## PLUMBING

COURSE	LEVEL	CODE
Building Services – Plumbing Diploma	1	R161
Plumbing Studies Diploma	2	R194
Plumbing Studies Diploma	3	R224

Level 2 and level 3 apprenticeships in Plumbing & Heating are also available – visit [wmc.ac.uk/apprenticeships](http://wmc.ac.uk/apprenticeships) for full details.

Your study programme is tailored to your individual needs and usually lasts 2 years. See page 8 for details.

## CONSTRUCTION – PROFESSIONAL STUDIES

COURSE	LEVEL	CODE
BTEC Construction and the Built Environment Diploma - 90 credit	3	R251
Construction and the Built Environment Subsidiary Diploma	3	R268

### WHERE NEXT?

Many students progress onto jobs and/or apprenticeships once they have completed their study programmes. Level 3 students often progress on to Higher Education courses such as the BTEC Higher National Certificate (HNC) programme in Construction & the Built Environment, at Wirral Met College. Many people decide to become self-employed and set up their own business once they have gained the skills and experience in their trade.

If you have decided which course you want to study, apply online at [wmc.ac.uk](http://wmc.ac.uk). If not, get in touch with our Student Advisers who will help you.

### WHERE ARE THEY NOW?

**Christopher Thompson** studied a level 3 apprenticeship in Electrical Installation at Wirral Met. Christopher has worked in the construction industry since the age of 16 but wanted to learn new skills. He is currently completing his training which will allow him to register with an electrical governing body and then install and certify his own work. He said “The facilities at Wirral Met are very good and the workshops have very helpful equipment for training.”





# INDUSTRY OPPORTUNITIES

CAREERS INCLUDE:  
**ARCHITECT, BRICKLAYER, CARPENTER/JOINER, CIVIL ENGINEER,  
ELECTRICIAN, HEATING/VENTILATION TECHNICIAN,  
PAINTER/DECORATOR, PLASTERER, PLUMBER, SELF EMPLOYMENT**



## YOUR EARNING POTENTIAL:



Newly-qualified Electricians may earn...

**£18,798 PER YEAR**

With experience, this can rise to...

**£42,062 PER YEAR**



Sources: [nationalcareersservice.direct.gov.uk](http://nationalcareersservice.direct.gov.uk) | [wmc.emsicareercoach.co.uk](http://wmc.emsicareercoach.co.uk)

**YOU WILL DEVELOP YOUR SKILLS IN OUR SCIENCE, TECHNOLOGY, ENGINEERING AND MATHS (STEM) CENTRE. THE ENGINEERING WORKSHOPS CONTAIN A RANGE OF SPECIALIST MACHINERY AND EQUIPMENT INCLUDING PROGRAMMABLE LOGIC CONTROLLER (PLC) AND COMPUTER NUMERICAL CONTROL (CNC) SYSTEMS TO SUPPORT ADVANCED MANUFACTURING & CNC MACHINERY PROCESSES.**

Study programmes delivered at our **Twelve Quays Campus** include:

COURSE	LEVEL	CODE
<b>NVQ Performing Engineering Operations Certificate</b>	1	E011
<b>Engineering Diploma</b>	2	E013
<b>Engineering National Foundation Diploma</b>	3	E157
<b>BTEC Engineering National Extended Diploma</b>	3	E158

Level 2 and Level 3 apprenticeships in Improving Operations, Performing Engineering Operations, Engineering Maintenance, Fabrication and Welding and Electrical Engineering are also available – visit [wmc.ac.uk/apprenticeships](http://wmc.ac.uk/apprenticeships) for full details. Your study programme is tailored to your individual needs and usually lasts 2 years. See page 8 for details. Apply online at [wmc.ac.uk](http://wmc.ac.uk)

## WHERE NEXT?

Many students progress into jobs and/or apprenticeships once they have completed their full-time studies. Level 3 students often progress into Higher Education courses such as the BTEC Higher National Certificate (HNC) or Higher National Diploma (HND) courses in Engineering, offered at Wirral Met College, or to university.

## WHERE ARE THEY NOW?

**Jonathan Faragher** gained an apprenticeship at GS Engineering and won the IMechE Award for Most Improved Apprentice. He has now embarked upon a cadetship to become an engineering officer at Maersk Shipping. Maersk has given Jon the opportunity to attend Warsash Maritime Academy, part of Southampton Solent University, where he is studying engineering at Degree level.





# INDUSTRY OPPORTUNITIES

CAREERS INCLUDE:

**ENGINEERING TECHNICIAN,  
PROFESSIONAL ENGINEER**



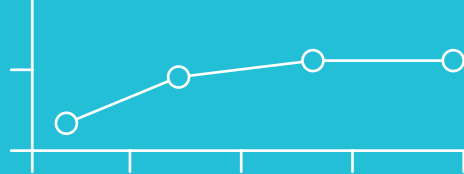
**YOUR EARNING  
POTENTIAL:**



Highly experienced Engineers can earn as much as...

**£54,230 PER YEAR**

This career has remained the same over the last 2 years, and is expected to remain the same over the next 4 years.



Sources: [nationalcareersservice.direct.gov.uk](http://nationalcareersservice.direct.gov.uk) | [wmc.emsicareeroach.co.uk](http://wmc.emsicareeroach.co.uk)

# MOTOR VEHICLE STUDIES

**EXCELLENT LINKS WITH LARGE AND SMALL EMPLOYERS HAVE ENABLED US TO DEVELOP A FLEXIBLE RANGE OF QUALIFICATIONS TO EQUIP YOU WITH THE SKILLS AND KNOWLEDGE YOU NEED TO SUCCEED IN THIS INDUSTRY.**

Study programmes delivered at our **Twelve Quays Campus** include:

COURSE	LEVEL	CODE
<b>Introduction to Vehicle Technology Diploma</b>	Entry 3	E127
<b>Vehicle Maintenance Diploma</b>	1	E132
<b>Light Motor Vehicle Maintenance and Repair Diploma</b>	2	E024
<b>Light Vehicle Maintenance and Repair Principles Diploma</b>	3	E023

Level 2 and level 3 apprenticeships in Vehicle Maintenance and Repair (Light Vehicle) are also available – visit [wmc.ac.uk/apprenticeships](http://wmc.ac.uk/apprenticeships) for full details. Your study programme is tailored to your individual needs and usually lasts 2 years. See page 8 for details.

## WHERE NEXT?

Many students progress onto jobs and/or apprenticeships once they have completed their full-time studies. Level 3 students often progress into Higher Education courses such as the BTEC Higher National Certificate (HNC) course in Engineering offered at Wirral Met College, or to university.

If you have decided which course you want to study, apply online at [wmc.ac.uk](http://wmc.ac.uk). If not, get in touch with our Student Advisers who will help you.

## WHERE ARE THEY NOW?

**Georgia Murphy** has completed her level 2 apprenticeship in vehicle maintenance and repair with West Wallasey Van Hire. She is looking to continue on to level 3 apprenticeship and to then become employed as a full-time mechanic on completion of her studies with West Wallasey Van Hire.





# INDUSTRY OPPORTUNITIES

CAREERS INCLUDE:

**MOTORSPORT TECHNICIAN, MOTOR VEHICLE TECHNICIAN, MECHANIC, MOTOR VEHICLE BREAKDOWN TECHNICIAN, SELF EMPLOYMENT**



## YOUR EARNING POTENTIAL:



Newly qualified Mechanical Engineers may earn..

**£23,283 PER YEAR**

With experience, this can rise to between...

**£37-59,000 PER YEAR**

This career has grown by 1% over the last 2 years, and is expected to remain the same over the next 4 years.



Sources: [nationalcareersservice.direct.gov.uk](http://nationalcareersservice.direct.gov.uk) | [wmc.emsicareercoach.co.uk](http://wmc.emsicareercoach.co.uk)

**ENROL WITH WIRRAL MET COLLEGE AND YOU WILL TRAIN IN OUR FULLY EQUIPPED HAIRDRESSING SALONS AT THE CONWAY PARK CAMPUS. OUR TEAM OF TUTORS ARE EXPERIENCED HAIRDRESSING PROFESSIONALS AND SPECIALIST TEACHERS WHO WILL HELP YOU DEVELOP YOUR SKILLS TO BECOME A SUCCESSFUL HAIRDRESSER.**

Study programmes delivered at our **Conway Park Campus** include:

COURSE	LEVEL	CODE
<b>Introduction to the Hair and Beauty Sector</b>	Entry	G095
<b>NVQ Hairdressing Diploma</b>	1	G022
<b>NVQ Hairdressing Diploma</b>	2	G024
<b>NVQ Hairdressing Diploma</b>	3	G039

Your study programme is tailored to your individual needs and usually lasts 2 years. See page 8 for details. Level 2 and level 3 apprenticeships in Hairdressing are also available – visit **wmc.ac.uk/apprenticeships** for full details.

## WHERE NEXT?

Many students progress into jobs and/or apprenticeships once they have completed their full-time study programmes. You may decide to become self-employed and set up your own business once you have gained the skills and experience.

If you have decided which course you want to study, apply online at **wmc.ac.uk**. If not, get in touch with our Student Advisers who will help you.

## WHERE ARE THEY NOW?

**Vicky Diamond** has successfully completed a level 3 Diploma in Hairdressing and has received a personal achievement award for her time at Wirral Met. In addition to this, she is a volunteer at L1 Hair and Beauty in Liverpool City Centre to gain experience and build her confidence.







# INDUSTRY OPPORTUNITIES

CAREERS INCLUDE:  
**BARBER, HAIR STYLIST, SESSION STYLIST,  
SALON MANAGER, SELF EMPLOYMENT**



## YOUR EARNING POTENTIAL:



Fully trained Hairdressers can earn between...

**£12-19,000 PER YEAR**

Top professional Hairdressers can earn...

**£30,000 PER YEAR**



Sources: [nationalcareersservice.direct.gov.uk](http://nationalcareersservice.direct.gov.uk) | [wmc.emsicareercoach.co.uk](http://wmc.emsicareercoach.co.uk)

# BEAUTY THERAPY

**ENROL WITH WIRRAL MET AND YOU WILL TRAIN IN OUR FULLY EQUIPPED BEAUTY SALONS AT OUR CONWAY PARK CAMPUS. WITH THE SUPPORT OF OUR EXPERIENCED STAFF, YOU WILL SOON BE PREPARED TO START YOUR CAREER IN THIS GROWING INDUSTRY. YOU WILL GAIN EXPERIENCE IN OUR BEAUTY SALONS AND ALSO GET INVOLVED IN COMPETITIONS TO SHOW OFF YOUR TALENTS.**

Study programmes delivered at our **Conway Park Campus** include:

COURSE	LEVEL	CODE
<b>Introduction to the Hair and Beauty Sector</b>	Entry	G095
<b>NVQ Beauty Therapy</b>	1	G036
<b>NVQ Beauty Therapy</b>	2	G025
<b>NVQ Beauty Therapy</b>	3	G027

Your study programme is tailored to your individual needs and usually lasts for 2 years. See page 8 for details. Level 2 and level 3 apprenticeships are also available – visit [wmc.ac.uk/apprenticeships](http://wmc.ac.uk/apprenticeships) for full details.

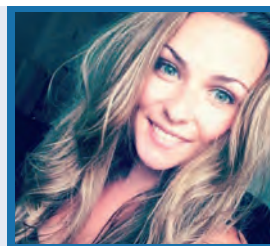
## WHERE NEXT?

Once you have completed your level 1 qualification, you can progress to level 2 and/or gain employment as a junior assistant in a health spa, sports centre or beauty salon. Those completing their level 2 qualifications can become practitioners in a health spa, sports centre or beauty salon and progress to level 3 qualifications. Students completing their level 3 qualifications may work in salons, on cruise ships, in television and the media, or set up their own business.

If you have decided which course you want to study, apply online at [wmc.ac.uk](http://wmc.ac.uk). If not, get in touch with our Student Advisers who will help you.

## WHERE ARE THEY NOW?

**Jessica Hallas** has completed the level 2 Beauty Therapy apprenticeship with Wirral Met and won the ‘Apprentice of the Year’ award. Jessica has since progressed to a level 3 Beauty Therapy Apprenticeship and is working as Beauty Therapist at Beautee, a salon in Bebington, Wirral.





# INDUSTRY OPPORTUNITIES

CAREERS INCLUDE:

**BEAUTY THERAPIST, MAKE-UP ARTIST,  
MESSAGE THERAPIST, NAIL TECHNICIAN,  
SALON MANAGER, SELF EMPLOYMENT**



## YOUR EARNING POTENTIAL:

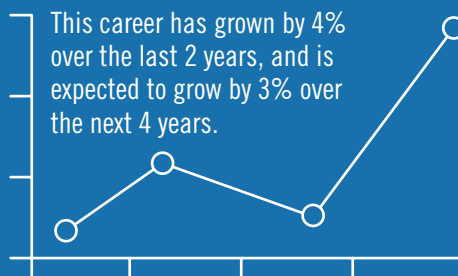


Beauty Therapists typically earn between...

**£15-20,000 PER YEAR**

Salon Managers can earn over...

**£33,000 PER YEAR**



Sources: [nationalcareersservice.direct.gov.uk](http://nationalcareersservice.direct.gov.uk) | [wmc.emsicareercoach.co.uk](http://wmc.emsicareercoach.co.uk)

# HEALTH & SOCIAL CARE

**WORKING CLOSELY WITH NHS TRUSTS, LOCAL AUTHORITIES AND PRIVATE BUSINESSES ACROSS THE ADULT SOCIAL CARE AND HEALTHCARE INDUSTRIES, WE HAVE BUILT OUR REPUTATION FOR QUALITY EDUCATION AND TRAINING THAT MAKES A DIFFERENCE.**

Study programme delivered at our **Twelve Quays Campus**:

COURSE	LEVEL	CODE
CACHE NCFE Preparation 1 for Health, Care and Early Years	1	J199
Health and Social Care – Preparing for Work	2	J187
Health and Social Care Diploma	2	J023
Health and Social Care Technical Foundation Diploma	3	J198
Pathway to Nursing – Progression to BH (Hons)	3	J203

Your study programme is tailored to your individual needs and usually lasts 2 years. See page 8 for details. We have a variety of apprenticeships available in Health and Social Care at levels 2 and 3 – visit [wmc.ac.uk/apprenticeships](http://wmc.ac.uk/apprenticeships) for full details.

Wirral Met College works in partnership with employers including Wirral University Teaching Hospital NHS Foundation Trust to offer traineeships. Students doing traineeships have worked in areas such as Clinical Support, Business Administration, Engineering, Hairdressing and Catering. To find out about what a traineeship involves and current traineeship vacancies, visit [wmc.ac.uk/apprenticeships](http://wmc.ac.uk/apprenticeships) for full details.

## WHERE NEXT?

Many students progress into jobs once they have completed their full-time study programmes, and other level 3 students progress onto Higher Education to study towards a degree, such as the BSc (Hons) Psychology at Wirral Met College, which is validated by the University of Liverpool.

Working in Partnership with



If you have decided which course you want to study, apply online at [wmc.ac.uk](http://wmc.ac.uk). If not, get in touch with our Student Advisers who will help you.

## WHERE ARE THEY NOW?

**Katie Hilliard** studied the level 3 Health and Social Care - Preparing to Work course at Wirral Met. She has now progressed to the University of Chester to study a Degree in Adult Nursing. Katie said, "Wirral Met has prepared me for university life by giving me the skills and confidence to start my nursing journey."



# INDUSTRY OPPORTUNITIES

CAREERS INCLUDE:

**CARE ASSISTANT, COUNSELLOR, DENTAL NURSE,  
HEALTH PROFESSIONAL, NURSE, SOCIAL WORKER**



**YOUR EARNING  
POTENTIAL:**



Nurses can earn between...

**£23-43,000 PER YEAR**

Health Professional can earn up to...

**£65,000 PER YEAR**



Sources: [nationalcareersservice.direct.gov.uk](http://nationalcareersservice.direct.gov.uk) | [wmc.emsicareercoach.co.uk](http://wmc.emsicareercoach.co.uk)

# HOSPITALITY & CATERING

WORKING IN OUR FULLY LICENSED TRAINING RESTAURANT, THE BIRCHES, YOU WILL DEVELOP A RANGE OF SKILLS AND EXPERIENCE TO PREPARE YOU FOR WORK IN THIS EXCITING PROFESSION. YOU WILL ALSO TAKE PART IN A NUMBER OF THEMED EVENTS AND COMPETITIONS, TO DEVELOP YOUR WORK EXPERIENCE.

Study programmes delivered at our **Conway Park Campus** include:

COURSE	LEVEL	CODE
<b>NVQ Hospitality Services</b>	1	H068
<b>NVQ Diploma in Professional Cookery</b>	2	H017
<b>Technical Certificate in Professional Cookery</b>	2	H100
<b>NVQ Certificate in Patisserie and Confectionery</b>	2	H099
<b>NVQ Diploma in Food and Beverage Service</b>	2	H067
<b>NVQ Advanced Diploma in Professional Cookery</b>	3	H081
<b>NVQ Hospitality Leadership and Supervision</b>	3	H064

Your study programme is tailored to your individual needs and usually lasts 2 years. See page 8 for details. Level 2 and level 3 Apprenticeships in Food & Beverage Service and Professional Cookery are also available – visit [wmc.ac.uk/apprenticeships](http://wmc.ac.uk/apprenticeships) for full details.

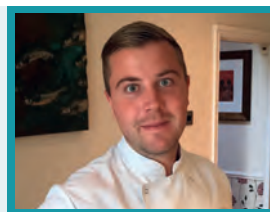
## WHERE NEXT?

Students completing level 1 and 2 study programmes progress into jobs or apprenticeships within the catering and hospitality industry.

If you have decided which course you want to study, apply online at [wmc.ac.uk](http://wmc.ac.uk). If not, get in touch with our Student Advisers who will help you.

## WHERE ARE THEY NOW?

**Sam Creedon** studied level 2 and level 3 in Professional Cookery in 2010 and has since been working with a number of Michelin Star chef's to develop his knowledge in the industry. He is now back in Wirral and is about to set up his own private dining business 'Ensemble'.





# INDUSTRY OPPORTUNITIES

CAREERS INCLUDE:

**BAR MANAGER, CHEF, HOTEL MANAGER,  
RESTAURANT MANAGER,  
FRONT OF HOUSE RECEPTIONIST**



## YOUR EARNING POTENTIAL:

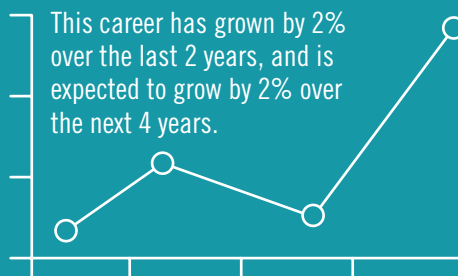


A Chef may earn between...

**£14-22,000 PER YEAR**

Highly experienced Managers can earn between...

**£16-42,000 PER YEAR**



Sources: [nationalcareersservice.direct.gov.uk](http://nationalcareersservice.direct.gov.uk) | [wmc.emsicareercoach.co.uk](http://wmc.emsicareercoach.co.uk)

# LOGISTICS & WAREHOUSING

**WIRRAL MET COLLEGE'S SPECIALIST LOGISTICS & WAREHOUSING CENTRE HAS BEEN CREATED TO MEET THE INCREASING DEMAND FOR PEOPLE WITH SKILLS AND QUALIFICATIONS TO SUPPORT THIS GROWING SECTOR, INCLUDING CAREERS IN WAREHOUSING, FORKLIFT TRUCK DRIVING, SUPPLY CHAIN MANAGEMENT AND WAREHOUSE MANAGEMENT.**

Students will also have the opportunity to attain a Forklift Truck driving qualification whilst on the course, improving their employment potential even further. In addition, key employability skills such as team working and customer service will be developed and students will also get the opportunity to complete high-quality work placements with local employers to build on their knowledge and experience of this fast-growing industry.

Study programme delivered at our **Twelve Quays Campus**:

COURSE	LEVEL	CODE
Logistics - Warehousing and Storage	1	F032
Logistics - Warehousing and Storage	2	F034

## WHERE NEXT?

Many students progress into jobs or an apprenticeship after completing their level 1 and 2 study programmes.

If you have decided which course you want to study, apply online at [wmc.ac.uk](http://wmc.ac.uk). If not, get in touch with our Student Advisers who will help you.

## MEET THE STUDENT

As part of his level 1 Logistics course, **Tom Firth** completed work experience at 'Regal Wholesale' in Bromborough where he had excellent feedback from the employer. Tom said, "I enjoyed my work experience and was surprised at the variety of skills I had learned which I was able to use in the workplace. I am coming back next year to complete a level 2 in the hope of gaining an apprenticeship."







# INDUSTRY OPPORTUNITIES

CAREERS INCLUDE:

**WAREHOUSE MANAGER, DISTRIBUTION ASSISTANT,  
SUPPLY CHAIN MANAGER, FORK-LIFT DRIVER**



**YOUR EARNING  
POTENTIAL:**

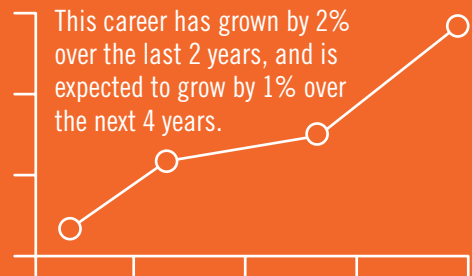


Warehouse Managers can earn between...

**£17-43,000 PER YEAR**

Warehouse Operatives can earn from...

**£16-33,000 PER YEAR**



Sources: [nationalcareersservice.direct.gov.uk](http://nationalcareersservice.direct.gov.uk) | [wmc.emsicareercoach.co.uk](http://wmc.emsicareercoach.co.uk)

# PUBLIC & UNIFORMED SERVICES

THERE ARE PLENTY OF CAREERS TO CHOOSE FROM, WHETHER YOU WANT TO WORK IN THE ARMED FORCES, POLICE SERVICE, FIRE SERVICE OR OTHER UNIFORMED PUBLIC SECTOR ORGANISATIONS. OUTDOOR ACTIVITIES, EXHIBITIONS AND EVENTS, RUN IN CONJUNCTION WITH THE ARMED FORCES, POLICE AND FIRE SERVICE, ARE A ROUTINE PART OF THESE PROGRAMMES.

Study programmes delivered at our **Oval Campus**, Bebington, include:

COURSE	LEVEL	CODE
<b>BTEC Public Services Diploma</b>	2	K020
<b>NCFE Military Preparation</b>	2	K013
<b>BTEC Public Services Diploma</b>	3	K094
<b>BTEC Public Services Extended Diploma</b>	3	K008
<b>NCFE Military Preparation</b>	3	K077

Your study programme is tailored to your individual needs and usually lasts 2 years. See page 8 for details.

## WHERE NEXT?

Students can progress into careers in the Armed Forces, Fire or Police, although some will progress into Higher Education to study on a degree programme.

If you have decided which course you want to study, apply online at [wmc.ac.uk](http://wmc.ac.uk). If not, get in touch with our Student Advisers who will help you.

## WHERE ARE THEY NOW?

**Stephen Douglas** completed level 2 Public Services and level 2 Fitness Instructor courses with Wirral Met. He is currently studying towards the level 3 Extended Diploma in Public Services. Stephen completed 6 years within the Merseyside Army Cadet Force and achieved the rank of 'Cadet Regimental Sergeant Major' in 2017. He has now returned to the Merseyside Army Cadet Force as an adult instructor where he is due to complete this qualification.





# INDUSTRY OPPORTUNITIES

CAREERS INCLUDE:

**ARMY, NAVY, RAF, FIRE OFFICER,  
POLICE OFFICER**



**YOUR EARNING  
POTENTIAL:**

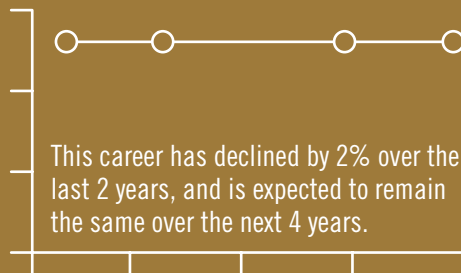


Starting salaries for Police Officers are from...

**£25,370 PER YEAR**

Fire Officers can earn between...

**£25-40,000 PER YEAR**



Sources: [nationalcareersservice.direct.gov.uk](http://nationalcareersservice.direct.gov.uk) | [wmc.emsicareercoach.co.uk](http://wmc.emsicareercoach.co.uk)

## CHOOSE:

- ⊕ Independent living
- ⊕ Supported employment opportunities
- ⊕ Progression to mainstream vocational study programmes

Prep 4 Life courses offer young people (aged 16-25), with learning difficulties or disabilities, the opportunity to develop independence and work skills that will help them in adult life.

COURSE TITLE	INDEPENDENT OPTIONS*	FUTURE OPTIONS*	VOCATIONAL OPTIONS**	PREPARATION FOR WORK**	SUPPORTED INTERNSHIP†
<b>COURSES DESIGNED FOR:</b>	Students with Severe Learning Difficulties	Students with Severe Learning Difficulties	Students with Severe or Moderate Learning Difficulties	Students with Moderate Learning Difficulties	Students with Moderate Learning Difficulties
<b>LEVEL</b>	Milestone 6 - Entry Level 1	Entry Level 1	Entry Level 2-3	Entry Level 3	Entry Level 3 or Level 1-3
<b>LENGTH OF COURSE</b>	1 or 2 years	1 or 2 years	1 or 2 years	1 or 2 years	1 year
<b>DELIVERY METHOD</b>	Classroom	Classroom	Classroom	Classroom	Workplace

\*INDEPENDENT OPTIONS AND FUTURE OPTIONS - help you to develop life skills and independence.

\*\*VOCATIONAL OPTIONS AND PREPARATION FOR WORK - help to develop skills for employment.

†SUPPORTED INTERNSHIP - combines work experience with learning that could lead to employment.

## ON THESE COURSES, YOU WILL:

- ⊕ learn independence skills that will help you at home and work
- ⊕ try some practical activities and work skills
- ⊕ get lots of support to help you achieve at your own level and pace
- ⊕ work on your communication and number skills
- ⊕ have a go at leisure and community activities

## DID YOU KNOW?

WE OFFER:

- ⊕ a thorough assessment of your needs
- ⊕ support to develop your person centred plan (a plan designed just for you)
- ⊕ small group teaching, with specialist teachers
- ⊕ one-to-one support, if you need it
- ⊕ specialist equipment
- ⊕ fully accessible facilities
- ⊕ highly trained care staff
- ⊕ close partnership working with other agencies including Physiotherapy, Occupational Therapy, Healthcare

For more information on these courses please contact the Additional Learning Support team on **0151 551 7435** or **0151 551 7777**.

## WHERE NEXT?

Many students on the Prep 4 Life courses progress into mainstream study programmes at Wirral Met College, and others move onto jobs or independent living in the local community.

## MEET THE STUDENT

Prep 4 Life has been working in partnership with Whizz-Kidz, an organisation who help to facilitate work placements for wheelchair users. **Holly Rogers** completed her work placement at Tesco Metro in Bebington for one day a week over 6 weeks.



# PRINCE'S TRUST TEAM

**IF YOU ARE AGED 16 TO 25 AND YOU WOULD LIKE TO DEVELOP YOUR PERSONAL SKILLS WORKING AS PART OF A TEAM WITHIN YOUR LOCAL COMMUNITY, THEN THE PRINCE'S TRUST TEAM PROGRAMME IS FOR YOU.**

This 12 week programme includes outdoor pursuits, work placement opportunities and a one week residential leading towards a final presentation of your achievements.

COURSE	LEVEL	CODE
Prince's Trust Team	Entry Level 3	K014
Prince's Trust Team	1 & 2	K014

## WHERE NEXT?

Students studying on these programmes progress into college study programmes, employment or an apprenticeship.

## MEET THE STUDENT

**Ian McCann** threw everything into the Prince's Trust programme and pushed himself out of his comfort zone to become a confident, motivated and caring individual. As a result, Ian gained work as a full-time carer and has now gone on to gain successful employment as a Police Officer.



SKILLS FOR LIFE & WORK

# PROGRESSION INTO FURTHER EDUCATION

PROGRESSION INTO FURTHER EDUCATION IS A 30 WEEK, FULL-TIME TAILOR MADE STUDY PROGRAMME. IT IS DESIGNED FOR 16 TO 19 YEAR OLDS WHO ARE NOT ENGAGED IN EDUCATION OR EMPLOYMENT, TO INCREASE YOUR EXPERIENCE AND KNOWLEDGE ACROSS A VARIETY OF VOCATIONAL AREAS.

Study programmes delivered at our **Conway Park Campus** include:

COURSE	LEVEL	CODE
Routes to Success (Route 1) – Employability Skills Certificate	Entry 3	L071
Routes to Success (Route 2) – Occupational Studies for the Workplace Award	Entry 3	L067
Routes to Success (Route 3) – Personal and Social Development Award	Entry 3	L072
Progression into Further Education	1	K057

If you have decided which course you want to study, apply online at [wmc.ac.uk](http://wmc.ac.uk). If not, get in touch with our Student Advisers who will help you.



# SCIENCE

THE SCIENCE COURSES ARE DESIGNED TO GIVE YOU OPPORTUNITIES TO PROGRESS INTO YOUR IDEAL SCIENTIFIC CAREER THROUGH A COMBINATION OF EXCELLENT TEACHING AND RELEVANT WORK EXPERIENCE PLACEMENTS. YOU WILL STUDY IN THE SCIENCE, TECHNOLOGY, ENGINEERING AND MATHS (STEM) CENTRE AT OUR TWELVE QUAYS CAMPUS. WIRRAL MET IS PROUD OF THE SPECIALIST FACILITIES WHICH INCLUDE A CHEMICAL INSTRUMENTATION LAB WITH NUCLEAR MAGNETIC RESONANCE EQUIPMENT, MOLECULAR BIOLOGY AND MICROBIOLOGY LABS, A PHYSICS AND ELECTRONICS LAB AND A LIFE SCIENCE LAB.

Study programmes delivered at our **Twelve Quays Campus** include:

COURSE	LEVEL	CODE
BTEC Applied Science Diploma	2	S001
BTEC Applied Science (Medical Science) 90 Credit Diploma	3	S143
BTEC Applied Science Extended Diploma	3	S201

Your study programme is tailored to your individual needs and usually lasts for 2 years. See page 8 for details. A level 3 apprenticeship in Laboratory Technician is available – visit [wmc.ac.uk/apprenticeships](http://wmc.ac.uk/apprenticeships) for full details.

## WHERE NEXT?

Many students progress into jobs and/or apprenticeships once they have completed their full-time study programmes. Level 3 students often progress onto Higher Education programmes such as the Higher National Certificate (HNC), or Higher National Diploma (HND) programmes in Applied Chemistry. Students can also progress into the Foundation Degree in Chemistry and then the BSc (Hons) Applied Chemistry Degree, which are offered at Wirral Met College working in partnership with the University of Central Lancashire (UCLan).

Working in Partnership with



If you have decided which course you want to study, apply online at [wmc.ac.uk](http://wmc.ac.uk). If not, get in touch with our Student Advisers who will help you.



## WHERE ARE THEY NOW?

**Lucky Ali** gained the BTEC Level 3 Applied Science Extended Diploma. She was also Students' Union President and Student Governor for 2017/18. She has progressed to The University of Liverpool to study Applied Medical Science and her ultimate goal after her Degree is to progress into a graduate entry Degree in medicine and then to become a Doctor. Lucky said, "I've really enjoyed my BTEC course and would recommend it to anyone as another pathway to university instead of A-Levels."



## INDUSTRY OPPORTUNITIES

CAREERS INCLUDE:

**BIOLOGIST, CHEMICAL CHEMIST,  
FORENSIC SCIENTIST, PHARMACIST**



**YOUR EARNING  
POTENTIAL:**



As a Forensic Scientist, new workers generally start around...

**£23,069 PER YEAR**

An experienced forensic scientist can earn up to...

**£53,372 PER YEAR**



Sources: [nationalcareersservice.direct.gov.uk](http://nationalcareersservice.direct.gov.uk) | [wmc.emsicareercoach.co.uk](http://wmc.emsicareercoach.co.uk)

# SPORTS, FITNESS & OUTDOOR EDUCATION

**THESE STUDY PROGRAMMES ARE BASED IN THE OVAL CAMPUS IN BEBINGTON, AND INCLUDE MANY OUTDOOR PURSUITS WITHIN THE UK. WITH THE HELP OF YOUR TUTORS' EXTENSIVE EXPERIENCE IN A RANGE OF OUTDOOR ACTIVITIES AND COMPETITIVE SPORTS, YOU WILL DEVELOP THEORETICAL KNOWLEDGE AND PHYSICAL SKILLS TO SUCCEED IN THIS EXHILARATING INDUSTRY.**

Study programmes delivered at our **Oval Campus**, Bebington include:

<b>COURSE</b>	<b>LEVEL</b>	<b>CODE</b>
<b>NCFE Introduction to Sport, Health and Fitness</b>	1	K056
<b>NCFE Diploma in Sport (Outdoor Adventure Sport)</b>	2	K015
<b>NCFE Sport Diploma (Sport Exercise and Fitness)</b>	2	K047
<b>NCFE Sport Diploma (Sports Coaching) Football Development</b>	2	K065
<b>BTEC Outdoor Adventure Diploma</b>	3	K083
<b>BTEC Outdoor Adventure Sport Subsidiary Diploma</b>	3	K084
<b>BTEC Sport and Exercise Science 90 Credit Diploma</b>	3	K040
<b>BTEC Sport and Exercise Sciences Extended Diploma</b>	3	K009
<b>BTEC Sport Diploma (Football Performance and Excellence)</b>	3	K085
<b>BTEC Sport Sub Diploma (Football Performance and Excellence)</b>	3	K086
<b>VTCT Personal Training Diploma (Gym Based)</b>	3	K048

Your study programme is tailored to your individual needs and usually lasts 1 year. See page 8 for details.

## WHERE NEXT?

Many students progress into jobs and/or self-employment once they have completed their full-time study programmes. Level 3 students often progress onto Higher Education to study on degree programmes.

If you have decided which course you want to study, apply online at [wmc.ac.uk](http://wmc.ac.uk). If not, get in touch with our Student Advisers who will help you.

## WHERE ARE THEY NOW?

**Chris Connelly** completed a Diploma in Sport and Exercise Science at Wirral Met. He then went on to complete a Bachelors and Master's Degree at the University of Chester. During his studies, Chris carried out work for Port Vale and Stoke City Football Club as well as leading analysis work for GB handball. Following this, he gained employment as a senior performance analyst with the English institute of Sport where he now works full-time for GB Boxing.



## INDUSTRY OPPORTUNITIES

CAREERS INCLUDE:

**FITNESS COACH/INSTRUCTOR, GYM MANAGER, PE TEACHER, PERSONAL TRAINER, SPORTS DEVELOPMENT OFFICER, SPORTS INSTRUCTOR, SPORTS/LEISURE CENTRE MANAGER**



### YOUR EARNING POTENTIAL:



Salaries for Sports Development Officers range from...

**£21-40,000 PER YEAR**

Experienced Fitness Instructors can earn around...

**£23,000 PER YEAR**

This career has remained the same over the last 2 years, and is expected to remain the same over the next 4 years.



Sources: [nationalcareersservice.direct.gov.uk](http://nationalcareersservice.direct.gov.uk) | [wmc.emsicareercoach.co.uk](http://wmc.emsicareercoach.co.uk)

# TRAVEL & TOURISM

**WIRRAL MET COLLEGE IS THE ONLY COLLEGE IN THE NORTH WEST OF ENGLAND TO BE GRANTED THE PRESTIGIOUS SWISSPORT ACADEMY STATUS (SWISSPORT IS THE WORLD'S LEADING SERVICE COMPANY TO AIRLINES AND AIRPORTS).**

Students studying on the level 2 course will have a guaranteed job interview with Swissport (subject to eligibility and a College recommendation). You will take part in behind-the-scenes tours of UK and overseas airports and hear from guest speakers.

Study programmes delivered at our **Conway Park Campus** include:

COURSE	LEVEL	CODE
Passport to Travel	Entry 3	L065
Check-in to the Travel Industry	1	L048
Cabin Crew	2	L037
Cabin Crew (Short course – 12 weeks)	2	L045
International Travel Studies	2	L063
BTEC Aviation Operations Diploma	3	L046
BTEC Travel and Tourism Extended Diploma	3	L068

Your study programme is tailored to your individual needs and usually lasts for 2 years. See page 8 for details.

## WHERE NEXT?

Many students progress to employment once they have completed their full-time study programmes.

If you have decided which course you want to study, apply online at [wmc.ac.uk](http://wmc.ac.uk). If not, get in touch with our Student Advisers who will help you.

## WHERE ARE THEY NOW?

**Olivia Newhouse** studied Aviation Operations level 3 at Wirral Met College. After completing her course Olivia secured a position in Passenger Services before becoming a flight dispatcher at Manchester Airport.





# INDUSTRY OPPORTUNITIES

CAREERS INCLUDE:

**AIR TRAFFIC CONTROLLER, ATTRACTION MANAGER,  
CABIN CREW, EVENT MANAGER, FLIGHT OPERATIONS MANAGER,  
OVERSEAS RESORT REPRESENTATIVE, TOUR MANAGER**



## YOUR EARNING POTENTIAL:



Air Traffic Controllers can earn between...

**£27-132,000 PER YEAR**

Experienced Air Cabin Crew can earn between...

**£12-34,000 PER YEAR**



Sources: [nationalcareersservice.direct.gov.uk](http://nationalcareersservice.direct.gov.uk) | [wmc.emsicareercoach.co.uk](http://wmc.emsicareercoach.co.uk)

# HOW DO I APPLY?

To help you make the right choice, call our Student Advisers on **0151 551 7777** or come and see us at the Conway Park Campus for impartial advice and guidance – we will help you to explore your options and get on the right course.

## 1. APPLY

- a. Visit [wmc.ac.uk](http://wmc.ac.uk) to search for courses and apply online, or
- b. Post your application form to Student Services, Wirral Met College, Conway Park Campus, Europa Boulevard, Birkenhead, CH41 4NT or bring it into one of the campus' receptions.
- c. We will acknowledge your application form and invite you to attend an interview.

## 2. INTERVIEW

- a. This is to help us to find out as much as we can about you, before you join us. You will be invited into the College to meet the tutors and discuss the course.
- b. Some courses require you to present a portfolio of your work during your interview.
- c. You can also discuss any learning support needs you may have.

## 3. OFFER

- a. We will offer you a place on a study programme at the College which is right for you.
- b. We will give you a letter confirming your offer of a place on the study programme.
  - i. If you have an unconditional offer, please confirm you want to accept your offer and return the form to Student Services.
  - ii. If you have an offer dependent on the grades you get in your exams, please confirm you want to accept your offer and return the form to Student Services (don't wait for your exam results). We will then let you know how and when you can complete your enrolment, before you start in September.

## 4. KEEPING IN TOUCH

- a. We will keep in touch with you with regular updates about Wirral Met College. Don't forget, if you change your phone number(s) or email address, please let us know.

## 5. START YOUR PROGRAMME

**Remember to apply as early as possible, as some study programmes are very popular and fill up quickly!**

If you have any queries, you change your mind, or you do not get the results you expect, please call our Student Advisers on **0151 551 7777**, or call in to the Conway Park Campus to see them in person. We will help you!

# DID YOU KNOW?

## WIRRAL MET OFFERS UNIVERSITY LEVEL COURSES VALIDATED BY LOCAL UNIVERSITIES

Visit [wmc.ac.uk/higher-education](http://wmc.ac.uk/higher-education) for details of Degrees, Foundation Degrees, Higher National Diplomas (HNDs), Higher National Certificates (HNCs), Certificate in Education (Education & Training) or Postgraduate Certificate in Education (Education & Training) qualifications.



We would love to hear your comments about this prospectus. Please email [marketing@wmc.ac.uk](mailto:marketing@wmc.ac.uk) and let us know if we can improve it. Please note every care has been taken to ensure the details in this prospectus were accurate at time of going to print. However, we may need to update our course offer or services from time to time. Please visit our website at [wmc.ac.uk](http://wmc.ac.uk) for the latest information.

A photograph of two graduates in wheelchairs sitting on a stage during an awards ceremony. They are wearing dark graduation gowns with red and white stoles and black mortarboards. In the background, a screen displays 'Higher Education Awards Ceremony' and a logo for 'WMC'.

**PICK UP YOUR COPY OF OUR HIGHER  
EDUCATION PROSPECTUS OR VISIT  
WMC.AC.UK/HIGHER-EDUCATION  
FOR MORE DETAILS**



Wirral Met College

0151 551 7777 | [wmc.ac.uk](http://wmc.ac.uk) |    

